



The Lehi City Flag Design Contest is an opportunity for residents and designers alike to play a pivotal role in shaping the identity of our beloved city. The City has never incorporated a flag and that's why we have called upon the community to help with a design. We received over 120 submissions and ask that you pick your top 10.



**#1 FLAG DESCRIPTION:** The flag design I made was very symbolic of the Nature of Lehi City. The brown represents mountains and the yellow the sun and the blue is the sky.



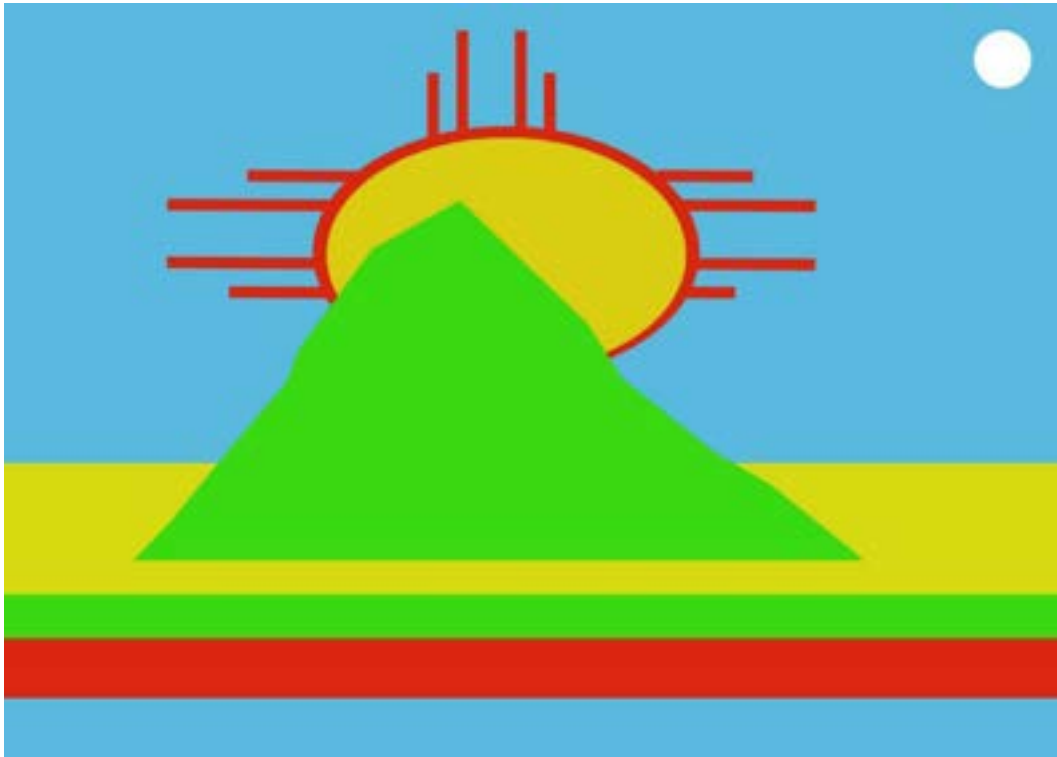
**# 2 FLAG DESCRIPTION:** N/A



**#3 FLAG DESCRIPTION:** N/A



**#4 FLAG DESCRIPTION:** Endeavor: to exert oneself to do or affect something; make an effort; strive. Incorporating Lehi City's colors, the bold stripe divides sky and land. In it is our effort to contribute to building our community and ourselves. Together, we are striving for excellence. The angle is reflective of the same degree of rise as the city logo, pointing Lehi City to the future, at the heart of Utah.



**# 5 FLAG DESCRIPTION:** Here we see the meeting of ancient tradition & the modern innovation Lehi has to offer with Silicon Slopes represented by the fiery sun symbol shining down on the mountains & Utah Lake. The moon reminds us of balance & to honor the cycles in nature.



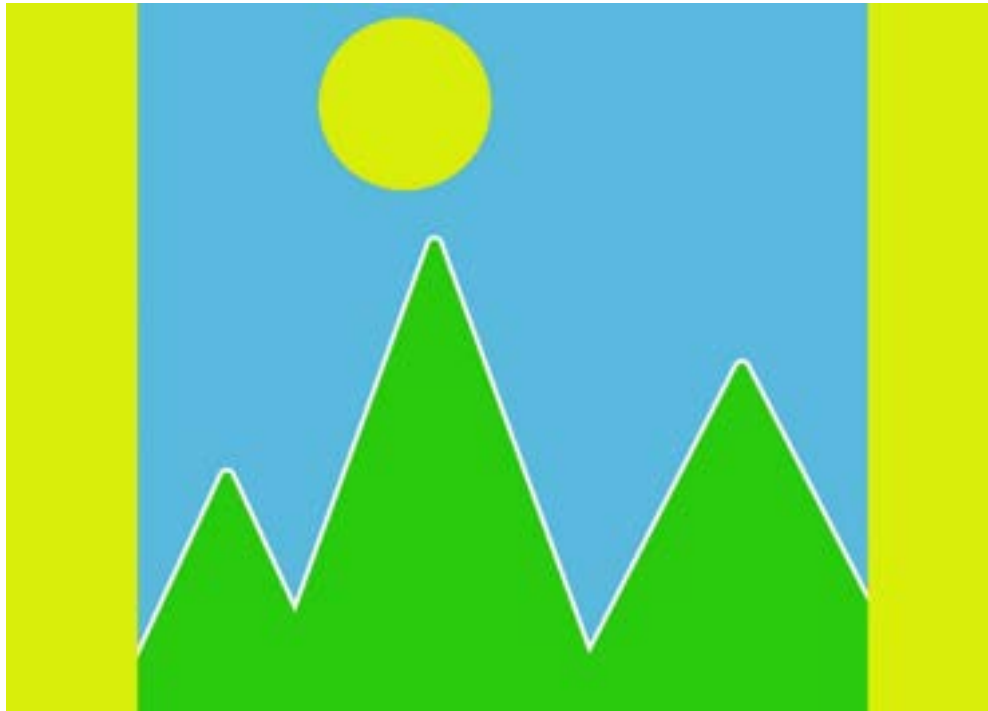
**#6 FLAG DESCRIPTION:** The wagon represents our city's past, and the sun represents our bright future. We, the citizens of Lehi, are all pioneers working toward a wonderful and bright future.



**#7 FLAG DESCRIPTION:** The stripes represent the stability & balance of the elements of water/blue, sunshine/yellow, & nature/green. The mountain peaks, sunlight, and Utah Lake are represented within the circle.



**#8 FLAG DESCRIPTION:** (Option 1) The blue represents Utah Lake & waterways. Green is the abundant beauty of nature & mountains. Yellow is the sunshine & vitality of Lehi.



**#9 FLAG DESCRIPTION:** (Option 2) The blue represents Utah Lake & waterways. Green is the abundant beauty of nature & mountains. Yellow is the sunshine & vitality of Lehi.



**#10 FLAG DESCRIPTION:** The new Utah State flag but the red is swapped for green and the blue is a lighter Lehi blue. A purple emblem replaces the hexagon with the beehive. Included a stylized compass (the Liahona) because it is an important object in the story of the prophet Lehi, who is the namesake of the city, but you could also swap it for a purple wagon wheel or a sugar beet to represent our pioneer heritage. Purple is an important color to the city of Lehi historically and is an incredibly good choice in making our flag stand out from others as purple is rarely featured on flags.



**#11 FLAG DESCRIPTION:** This flag represents Lehi's natural landscape which unites all of us. This design evokes Lehi's mountains, hills, green valleys, Jordan River, and Utah Lake. (Magdalena, age 2, drew this flag design with crayons. I helped her translate it into a digital format)



**#12 FLAG DESCRIPTION:** The flag captures Lehi City's past, present, and future as one coherent journey. Along the hoist run the Jordan River and the Wasatch Mountains, the two geographical bookends of Lehi. The green of the land symbolizes the growth and vibrancy of our community—a reminder that Lehi's strength is in its people. The blue sky beyond the mountains represents the limitless possibilities for Lehi's future. Set within this endless sky are two emblems of our City's history: the millstone and the wagon wheel. The millstone reminds us of Lehi's humble origins as a farm town built around the Lehi Sugar Factory, which today is the Lehi Roller Mills. The wagon wheel pays tribute to Lehi's pioneer settlers, its modern pioneers in science and technology, and its students—the literal Lehi High School Pioneers among them—who will shape the world of tomorrow.



**#13 FLAG DESCRIPTION:** (OPTION 1) I went with our city colors, because it's recognizable and known. I also decided to create a purple version because when I think of Lehi I think of our bright happy purple represented throughout our city.



**#14 FLAG DESCRIPTION:** (OPTION 1)



**#15 FLAG DESCRIPTION:** This flag represents Lehi's pioneer heritage and its modern spirit of rodeo pride.



**#16 FLAG DESCRIPTION:** The mountains represent peacefulness and the blue is for the sky, and it represents our strength and the clouds represent our freedom. The line is for peacefulness, and the triangles stands for the beautiful mountains, and the clouds represent all the people who live here, the citizens. The flag colors represent the good things that we have done and are doing.





**#17 FLAG DESCRIPTION:** The blue is for the water. The white is the snow where we get the water from. the star is for the star in the flag that represents the United State of America (Utah), the green is for all the land that we cover as a city. The star is just bursting and exploding with ideas.



**#18 FLAG DESCRIPTION:** (OPTION 1) The star pattern in the center of my flag represents Lehi as the crossroads and heart of Utah. The shape references quilt patterns from Lehi's founding pioneers. The colors evoke Lehi's natural beauty and the hope of vibrant, sustainable growth.



**#19 FLAG DESCRIPTION:** (OPTION 2)



**#20 FLAG DESCRIPTION:** The green stripe symbolizes our city's agricultural heritage and ongoing growth. The blue stripe symbolizes both our city's large size and its big future. The “checkerboard” pattern on the far left symbolizes how everyone here has come with and provides their own individual contribution, which in turn creates our wonderful city and community. Finally, the single star symbolizes that the Lehi community is united, heading towards a bright future, and leading others towards that same bright future.



**#21 FLAG DESCRIPTION:** This flag represents Lehi--the beautiful land between the Wasatch Mountains and Utah Lake. The sego lily in the center represents Lehi's natural beauty; it also recalls our pioneer and Native American heritage.



**#22 FLAG DESCRIPTION:** My flag represents Lehi; the beautiful land between Utah Lake and the Wasatch Mountains.



**#23 FLAG DESCRIPTION:** The green stripe symbolizes our city's agricultural heritage and also ongoing growth. The blue stripe symbolizes both our city's large size and its big future. The "half" hub and spoke or "half" wagon wheel symbolize Lehi as the interconnected center of Utah and Lehi's pioneering heritage, plus that the combined foundation of those helps us to innovatively grow into something even more amazing. Finally, the single star symbolizes that the Lehi community is both heading towards a bright future and leading others towards that same bright future.



**#24 FLAG DESCRIPTION:** This flag has many layers of symbolism. 1. The dark blue at the bottom represents the waters of Utah Lake. The two green triangles represent the mountains to the west and east that come together at Point of the Mountain. And the white diamond, where the mountains and Utah Lake meet, represents Lehi, the jewel of Utah. The light blue at the top represents the blue skies of hope, clarity, and natural beauty. 2. The 2 blue triangles also represent Salt Lake Valley and Utah Valley, and the white **(#24 CONTINUED)** diamond represents how Lehi joins the 2 valleys together. 3. The blue triangle at the bottom combined with the white diamond represents a snowcapped mountain that represents strength, consistency, and beauty. It is also a nod to our mountain home. 4. The 4 triangles that all converge in the middle of the white diamond represent the 4 pillars that make Lehi great. Blue at the bottom is for

Community. Green on the right is for Industry. Green on the left is for Progress. Blue at the top is for Faith.

5. The different shapes all come together to form 2 recognizable shapes: an hourglass and an envelope.

The hourglass represents our past, present, and future. It also represents our steady reliability and constant drive towards progress. The envelope represents our quest for genuine communication and an open invitation to all to take part in making our communities better and more united.



**#25 FLAG DESCRIPTION:** This flag is a bison surrounded by a wagon wheel. The bison represents the innovation of the past. I chose the bison to represent Lehi because they were an important animal to the pioneers. The wagon wheel represents Lehi looking toward the future. These symbols combine to represent a celebration of the past and our vision for the future. Lehi thrives on its celebration of traditional and innovative life, which is why this is a great design for our flag. (This is one of two flag designs I submitted. I submitted the other one in another form. The reason for that is so that the descriptions sound better.

Please ignore this blurb for the description of the flag, but know that I have turned in two flags)



**#26 FLAG DESCRIPTION:** This flag is a compass rose pointing towards the mountains. The mountains represent overcoming trials, just like the pioneers crossing the Rocky Mountains. Lehi is constantly changing and growing because of its trials. The compass is pointing toward the mountains because the way to discovery is through our trials. This city has repeatedly overcome trials, which has helped it in the past and will lead it to a bright future.



**#27**

**#27 FLAG DESCRIPTION:** My design has the colors of the Lehi City Logo, but I decided to change the white to a light yellow for aesthetics. You can see the Lehi train station which shows our history and our importance for Utah's development with the train being important for industrialization. In the top right

corner there is a gear to show the progression of Lehi's technical workforce, in the center of it is a square, this is a little easter egg and it's meant to be the square donut to pay respects to Lehi Bakery. If you live in Lehi you've definitely had a square donut! I tried to keep it simple but included some important symbols.



**28 #FLAG DESCRIPTION:** Green is for landscape and blue is for freedom and white for peace.



**#29 FLAG DESCRIPTION: (OPTION 1)** Blue stripe on top, green stripe on bottom. In the center, a green triangle points up to look forward to Lehi's future and a blue triangle points down to look back at Lehi's history. The triangles represent the stability and energy of the Lehi economy.



**#30 FLAG DESCRIPTION:** (OPTION 2)



**#31 FLAG DESCRIPTION:** (OPTION 1) Background: A diagonal split from the bottom-left to the top-right corner. •Upper Half: Blue with a white stylized mountain peak, representing the Wasatch Range. •Lower Half: Green, symbolizing the agricultural heritage and the community's growth.

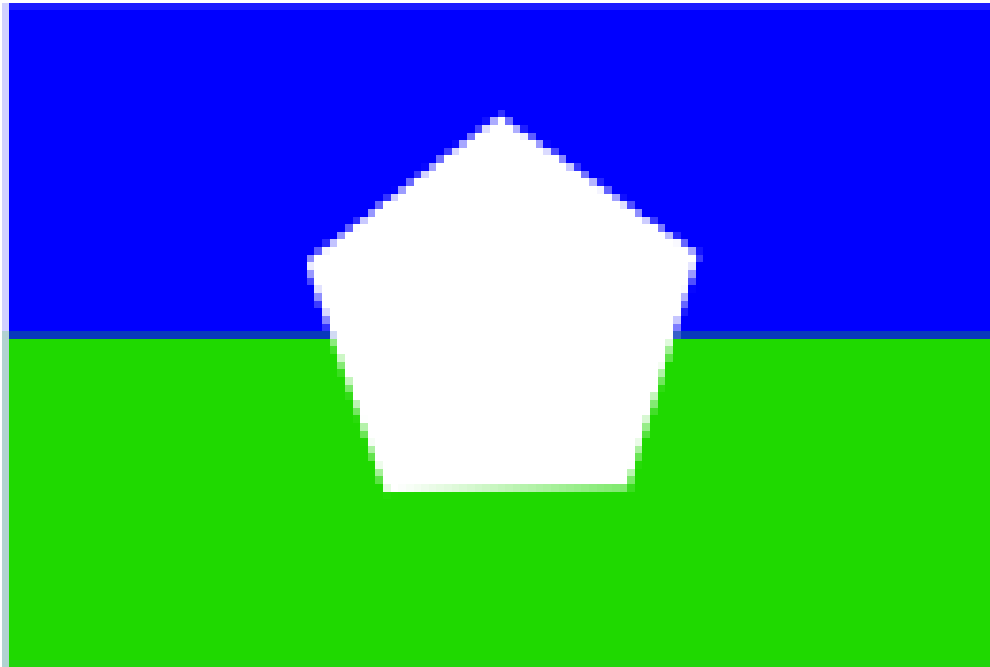




**#32 FLAG DESCRIPTION:** (OPTION 2)



**#33 FLAG DESCRIPTION:** The wagon wheel represents Lehi's pioneer heritage. The green portion that slopes on either side represents Lehi's geography sitting in a valley with Traverse Mountain area rising above the city. The upward slope of the white line represents progress towards our future. Green symbolizes agricultural influence and blue symbolizes freedom and peace.



**#34 FLAG DESCRIPTION:** The green at the bottom of the flag is not only one of our city's colors, it also represents the green fields, the roots of our past, from which our city is rapidly growing. The blue half of the flag represents the future and the technology which brings our city its fame. It also represents a blue sky and our city's future possibilities. The hexagon in the center of the flag shows how we are one of the hexagons in the great beehive of Utah. It points upward showing Lehi's quick growth toward the future that awaits us. It also represents our safe, pure, and sacred homes in Lehi as shown with the white coloration. In the end this flag shows that we come from green fields and that we are changing speedily with the future, but at the center of Lehi's importance is our homes.



**#35 FLAG DESCRIPTION:** (OPTION 1) Lehi is the gateway into Utah county, the first city going south of the state's capital and the last going to the state's capital. It is also the crossroads to the east and west regions within Utah county. The idea that Lehi is a gateway and crossroad is symbolically manifested by it being the

green star within the white diamond and triangle that represent Utah County. Blue and green create the sky and earth and the two stars in the sky represent the east and west regions within Utah county that Lehi gives access to being the crossroad. Both concepts tell these stories through the same methods but with different visual treatments.



**#36 FLAG DESCRIPTION:** (OPTION 2)



**#37 FLAG DESCRIPTION:** (OPTION 1) The flag has an aspect ratio 2:3 and is based on a white background. The white background is a reference to Lehi's history producing flour and sugar. The broad stripe and outlines are shaped to reference the front of Lehi Roller Mills. However, they are green to reference Lehi's history of agriculture. The navy-blue square tilted 45 degrees suggests the shape of a microprocessor and

represents Lehi's tech industry. It is off-center to place the main symbol closer to the hoist, for easier viewing. The blue and gold combination with the bronco is a reference to the same color combination on the state of Utah's flag. Gold also represents the tech industry, which often makes use of precious metals. While gold is by no means the most common metal, it is the most visually striking, and easiest to present on a flag. The green outline above and below the square suggest a mountain and a valley. They can also be taken as traces on a circuit board, thus blending the symbol of agriculture with a symbol for modern tech and placing both on the slope of a mountain. The bronco and rider is the most prominent elements of the flag, referencing Lehi's pioneering spirit, both in the past and in the future. The forward motion suggests progress. An explanation of this particular bronco design: I am aware Lehi already has a bronco statue/symbol available that (I assume) would be more natural to use. However, I found it difficult to distinguish that design under typical flag-flying conditions - at a distance, flapping in the wind. To address these issues, I ended up making this bronco symbol. It is based on a photo my mother took at a rodeo in Lehi.



**#38 FLAG DESCRIPTION:** (OPTION 2) The flag has an aspect ratio 3:4. It is composed of two halves, each 2 units wide and 3 units tall: The left half of the flag is a navy-blue field with a gold bronco and rider placed in the center. The blue and gold color combination serves two purposes: - It represents the tech industry, which often makes use of precious metals. While gold is by no means the most common metal, it is the most visually striking, and easiest to present on a flag. - It is a reference to the same color combination on the Utah state flag. The bronco and rider are the most prominent element of the flag, referencing Lehi's pioneering spirit, both in the past and in the future. The forward motion suggests progress. An explanation of this particular bronco design: I am aware Lehi already has a bronco statue/symbol available that (I assume) would be more natural to use. However, I found it difficult to distinguish that design under typical flag-flying conditions - at a distance, flapping in the wind. To address these issues, I ended up making this bronco symbol. It is based on a photo my mother took at a rodeo in Lehi. The right half of the flag is made of six green and white squares, arranged in a checkerboard pattern. Together they represent Lehi's history of agriculture and industry:- The white squares represent both flour and sugar - though the reference to sugar is more clear, since the square shape suggests the side of a sugar cube.- The green squares represent

Lehi's history of agriculture.- The six squares together are in reference to Lehi as Utah's sixth oldest city.- The square shapes can also be taken as a reference to modern tech industry: A microprocessor is square (generally).



**#39 FLAG DESCRIPTION:** Following the same symbolism of the current city colors. I also use white as the symbol of our white capped mountains and silicon slopes, the blue underneath symbolizes the Utah lake below. The pioneer wheel is a symbol deeply rooted in Lehi as we were settled by pioneers that grew sugar beets to boost the economy and throughout time the roller mills continued to turn those crops into wheat and to today where we pioneer the future of tech. Pioneers and the wagon wheel symbolize our heritage and our city's drive to provide a good place to live in the future.



**#40 FLAG DESCRIPTION: (OPTION 1)** The flag design embodies Lehi City's essence by blending historical significance with modern aspirations. The left side of the flag features a blue field, representing the city's future and high-tech industry. The green field on the right signifies Lehi's agricultural past. Separating these fields, the white curved stripe adds a sense of motion and connection, symbolizing the journey from the past to the future. At the center of the blue field is the "Heritage and Innovation Emblem," which includes

Abstract Industrial Building: This represents Lehi's historical architecture and industrial roots. Vertical Lines with Circles: These lines symbolize technological growth and innovation, reflecting the city's forward-looking vision. Star: Positioned at the base, the star signifies guidance, excellence, and community unity, also linking to Utah State and US flags. This design aligns with Mayor Mark Johnson's vision for a flag that goes beyond a simple logo, aiming to create a symbol everyone recognizes and feels connected to. Additionally, I have prepared a detailed case study of the flag design, which is available in a PDF file for further insights and understanding. Also, I have included a few variations of the flag.



**#41 FLAG DESCRIPTION: (OPTION 2)**



**#42 FLAG DESCRIPTION: (OPTION 3)**



**#43 FLAG DESCRIPTION:** (OPTION 1) As a member of the Lehi community for the past 10 years and having lived in the neighboring city of Saratoga Springs 10 years before, I have been inspired by Lehi’s unique community. I love Lehi! I designed this flag to represent and pay homage to what I believe is the foundation of our beautiful home. The wagon wheel represents the pioneers of our past, present, and future. The circuit board within the wheel is a nod to Silicon Slopes— Lehi’s contribution to the world’s ever-evolving tech industry. I placed the circuit board within the wagon wheel to symbolize Lehi’s contribution in pioneering the future (in tech, business, and more). Our hands represent a few things: our loving

**(#43 CONTINUED)** community, our family-centeredness, and our recognition that the youth of Lehi will be the leaders of our future. It shows that as citizens of Lehi, we value our families, neighbors, and youth. Wheat symbolizes Lehi’s successful roots in agriculture, the very thing that has been a major component of Lehi from the very beginning. I know many people in Lehi wish our city would remain the same, but the truth is that the only constant in our world is change. That said, we can (and should) remain true to our roots and values as a community while looking forward and making positive changes toward our future. That is what this flag represents. I made two variations of the flag, one with a white background and one with blue.

Thanks for your time and consideration!





**#44 FLAG DESCRIPTION:** (OPTION 2)



**#45 FLAG DESCRIPTION:** The foundation of this city are the farms and the people who toiled and made Lehi the amazing place it is now. I wanted that part of our history to be front and center symbolized by a windmill and farm/field.



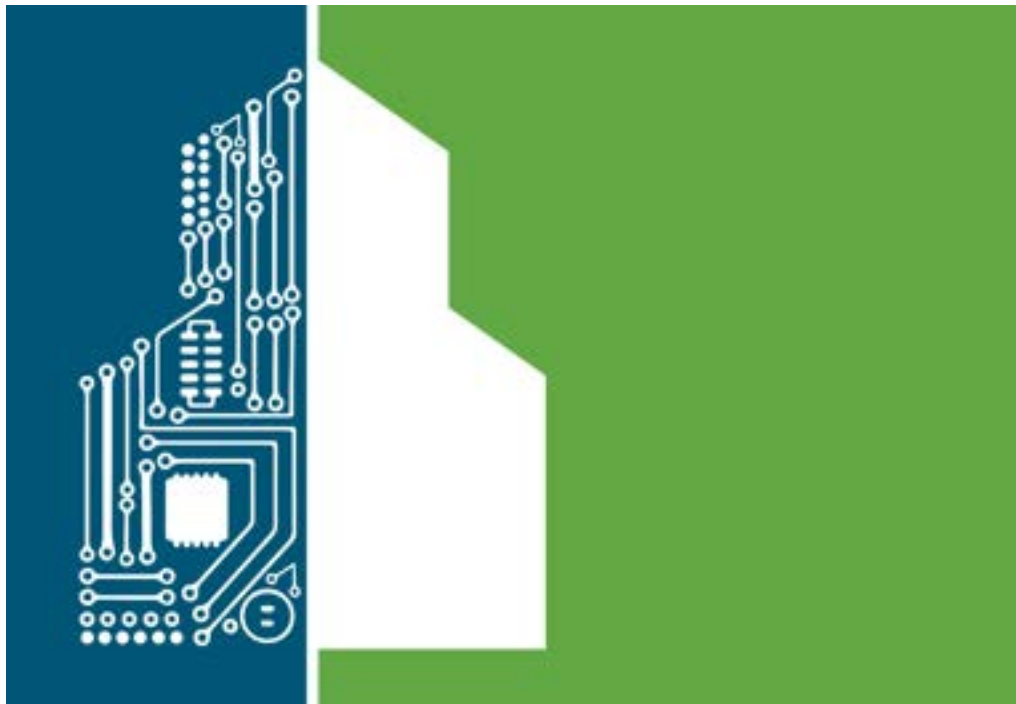
**#46 FLAG DESCRIPTION:** The triangle can symbolize many different things such as transformation, change, balance & harmony. It also resembles a mountain like the ones we are surrounded by. The 6 leaves symbolize growth & community, I think it can also symbolize agriculture which is another thing Lehi is and was pretty well known for. There are 6 of them because Lehi is the 6th oldest city in Utah.



**#47 FLAG DESCRIPTION:** Lehi Past and Present



**#48 FLAG DESCRIPTION:** For this flag design, I wanted to use a symbol easily recognizable to Lehi and the surrounding area. The depiction of the Lehi Roller Mills silhouette within a circle evokes the imagery of a sunset. The simple design highlights Lehi's iconic infrastructure and its proximity to Utah Lake.



**#49 FLAG DESCRIPTION:** The creative process behind this flag was to incorporate a symbol easily recognizable to the Lehi area. I chose the silhouette of Lehi Roller Mills because this building is a well-known landmark. Additionally, I wanted to represent the future of Lehi by incorporating computer circuitry, highlighting the city's growing reputation for technology. This juxtaposition of past and future showcases where Lehi has been and where they are going.



**#50 FLAG DESCRIPTION:** I used 5 stripes for the former and current name- Sulphur Spring, Evansville, Dry Creek, Snow Springs and Lehi. I also had a sun peaking over the mountains representing Mt Timpanogos.



**#51 FLAG DESCRIPTION:** The general design of the flag is based on the style of European national flags, but the stripes are arranged in a pattern that I've never seen used before. The odd ratio of the flag is an intentional design choice that makes it vexillologically unique without being difficult to fabricate (essentially, it's a normal 3:5 flag, but with an extra 1/3 of a stripe sewn to the end).



**#52 FLAG DESCRIPTION:** Inspired by Lehi's rich history and beautiful natural surroundings, my design features 5 main design elements. First, a wagon wheel. Lehi was settled by Mormon pioneers and because the Overland Stagecoach Route, the Pony Express Trail, and the Transcontinental Telegraph all passed through or near Lehi during the peak of their use. Second, a river/spring. The city has been known as Sulphur Springs, Snow's Springs, Dry Creek and like the design shows, the Jordan River runs through the city. Third, Lehi is a premier technology and commercial center and even has the nickname of Silicon Slopes. Which leads to the fourth symbol, mountains. Lehi is surrounded by Mountains on the East and the West and includes Traverse Mountain. Lastly, the sun is a symbol of the gorgeous landscape and Lehi's bright future.



**#53 FLAG DESCRIPTION:** The lofty sugar beet held high as a beacon to all mankind by the love of money and heavy traffic. Truly a symbol of the proud heritage of Lehi, its past, present, and future!



**#54 FLAG DESCRIPTION:** I designed my flag to represent diversity in Lehi. The different people in my flag show that Lehi welcomes all types of people. The blue and green colors represent Lehi's state colors. The buildings in the background of the flag are some of the buildings we have here at Lehi.



**#55 FLAG DESCRIPTION:** (OPTION 1) These flags show a bright yellow sun, symbolizing hope, progress, and the bright future of Lehi. The green mountains represent the Traverse Mountains and Silicon Slopes, highlighting Lehi's natural beauty and being a center for technological growth. The snow caps represent purity and the pioneering spirit of Lehi's community. The deep blue sky stands for strength and stability, aligning with Lehi's commitment to family and community.



**#56 FLAG DESCRIPTION:** (OPTION 2)



**#57 FLAG DESCRIPTION:** The wagon wheel at the center recognizes our pioneer founders and heritage. The navy blue symbolizes our proximity to Utah Lake. The green mountain range represents the Wasatch Mountains as well as the continuing upward progress of our city. Countries who are united have similar designs to show their connections to one another. The Lehi City flag mirrors the newly designed Utah State flag with both having a mountain range to show connection.

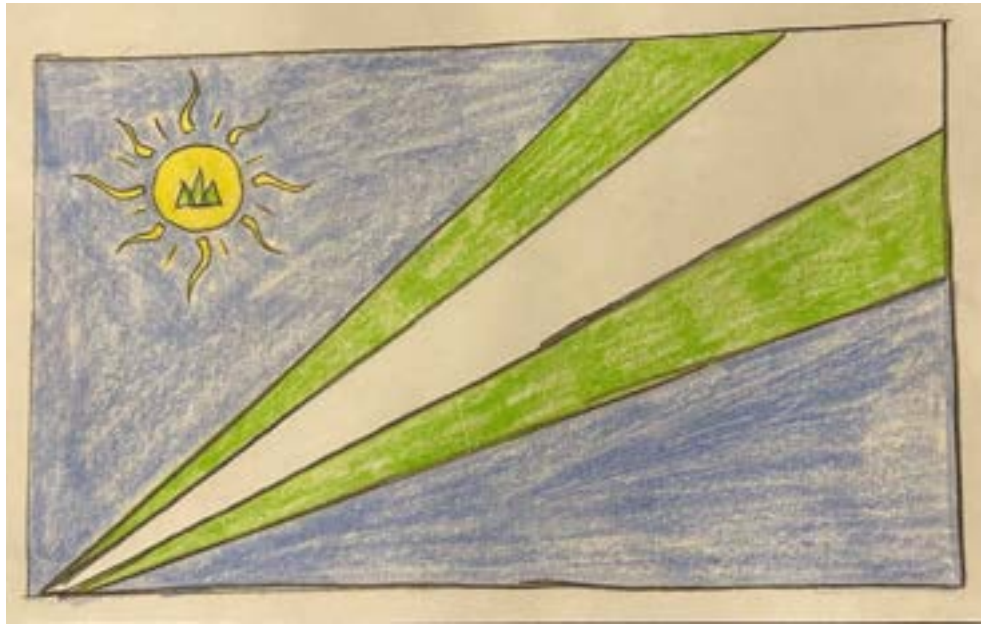


**#58 FLAG DESCRIPTION:** The green section signifies growth, prosperity, and the community's connection to nature. The sharp, white jagged stripe evokes the iconic mountains surrounding Lehi, while also reflecting the city's swift and upward progress. The blue section symbolizes the flowing waters of the Jordan River, a historical lifeline and ongoing source of vitality for the region.

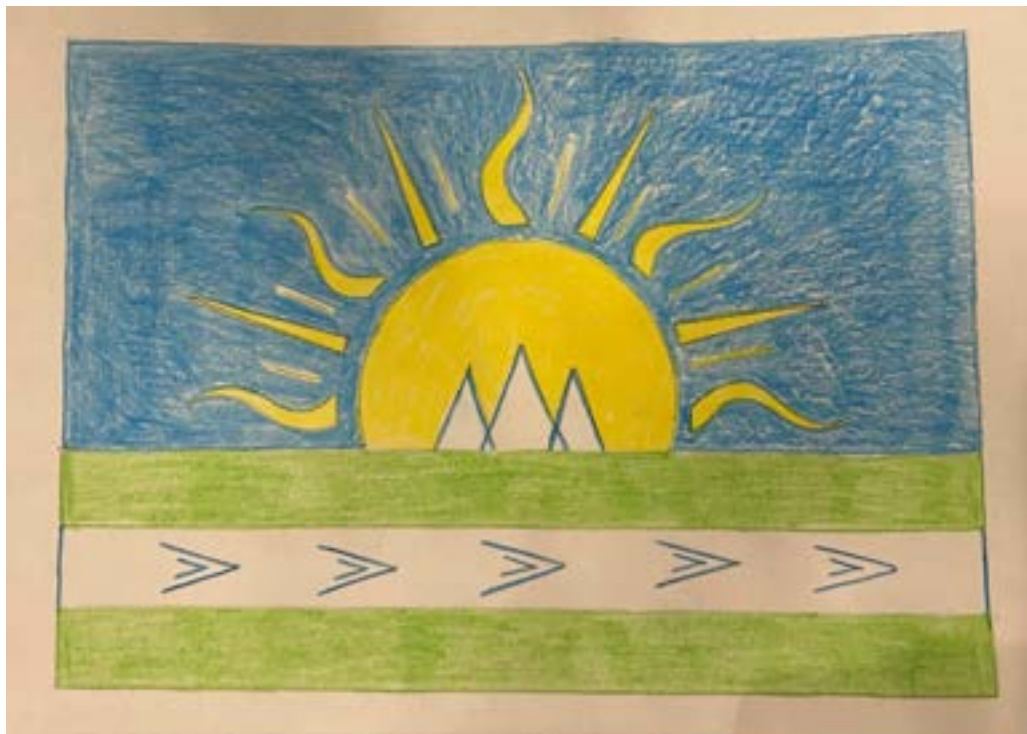


**#59 FLAG DESCRIPTION:** The peaks, symbolizing the white-capped mountaintops that frame the city, include a green summit signifying growth and technology, while the central position underscores Lehi's role as a vital link between neighboring communities. The six-pointed star marks Lehi's place in history as the sixth city founded in Utah, while also serving as a guiding light for a bright future. The bottom blue band represents the waters of the Jordan River, an essential part of Lehi's natural landscape.



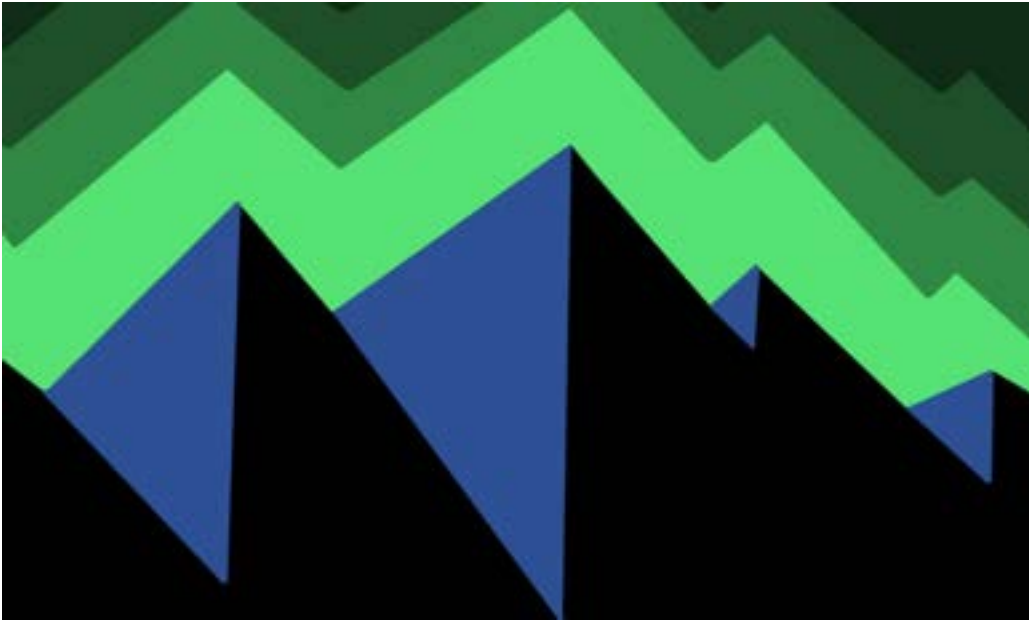


**#60 FLAG DESCRIPTION:** My Lehi City flag begins with a light blue background with two diagonal green lines on either side of a white line beginning in the bottom left corner and growing wider as they progress to the upper right corner. In the top left corner of the flag there is a small sun with three green mountain peaks in the center of it. The field of blue symbolizes wisdom. The wisdom of those before us and those who are here now. The green lines symbolize growth. Not only the physical growth of our city but the personal growth of the people as well. The white line symbolizes hope for the future of our city and its citizens. The three mountain peaks represent the past, present, and future. The sun is shining over each of these.

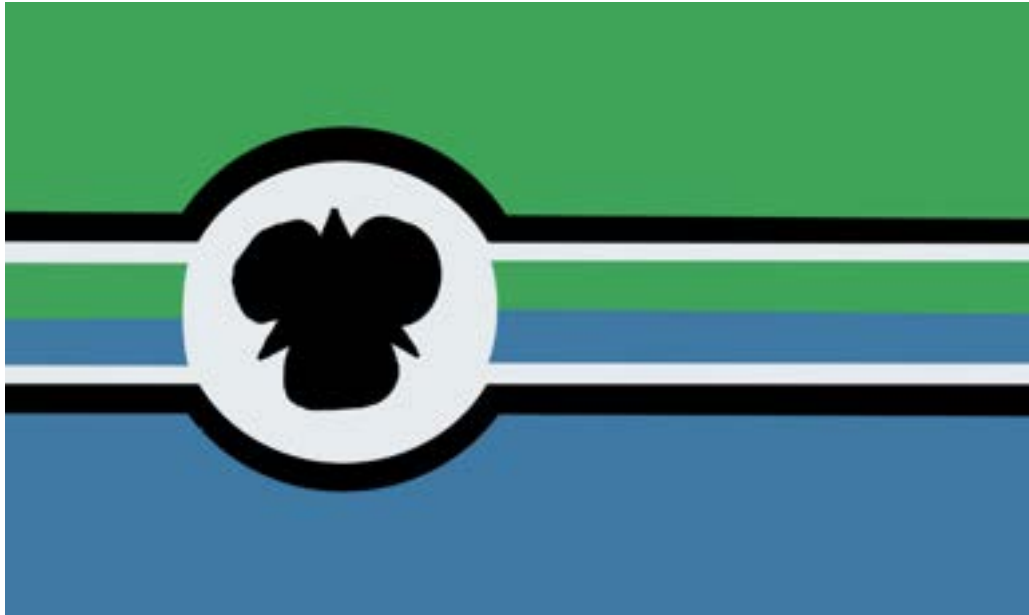


**#61 FLAG DESCRIPTION:** My Lehi City flag design begins with a yellow sun on a light blue background rising over three white mountain peaks. Below the rising sun are two horizontal green lines on either side of a horizontal white line with five open arrows pointing to the right evenly spaced through it. The field of blue (**#61 CONTINUED**) symbolizes wisdom. The wisdom of those before us and those who are here now. The green lines symbolize growth. Not only the physical growth of our city but the personal growth of the people as well. The white line symbolizes hope for the future of our city and its citizens. The three mountain peaks

represent the past, present, and future. The sun shining over each of these. The arrows point the way forward representing the forward thinking that makes our city great. The press to lead the way into the future.



**#62 FLAG DESCRIPTION:** (OPTION 1) First of the colors blue and green represent the city of Lehi, Black means for the determination of how the people of Lehi got here and what they are now. White stands for peace within the city of Lehi, and finally the shape of the state flower the Segoe Lily.



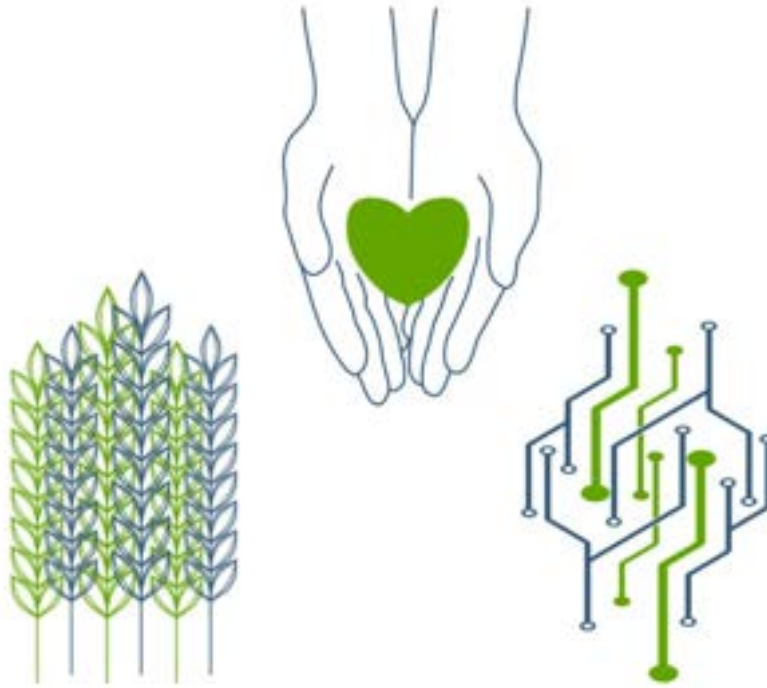
**#63 FLAG DESCRIPTION:** (OPTION 2)



**#64 FLAG DESCRIPTION: (OPTION 1)** At center in the flag is a wagon wheel, a symbol of our past present and future. The wagon wheel was how Lehi was first settled, it is the "hub" currently connecting the heart of Utah valley through its spokes to neighboring cities, and the future as it rolls forward into new technologies and progress. As the flag waves in the wind the wheel seems to eternally roll onward. Lehi's green and blue in the background harken to Lehi's current branding. The slant from upper left to lower right brings to mind Lehi's position on a map, straddling the I-15, as it passes through the hub of the wagon wheel.



**#65 FLAG DESCRIPTION: (OPTION 2)**



**#66 FLAG DESCRIPTION:** I created a simple design that shows the history [agriculture] and what lies ahead [technology] as well as incorporating the community [hands holding heart] which binds it all together creating the past, present and future that is Lehi.



**#67 FLAG DESCRIPTION:** The Ichthys on the left of the circle is a symbol for Christianity and represents the how the city started from Mormon pioneers settling in 1851. The circle starting from the Ichthys and ending at the tree represents the time from when Lehi was founded to the present day being the tree and representing growth.



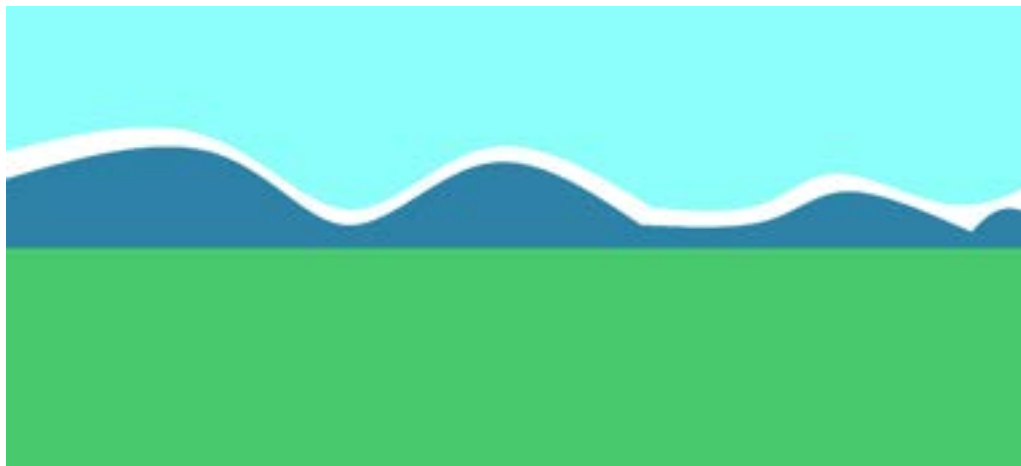
**#68 FLAG DESCRIPTION:** (OPTION 1) The sun shines on all of us! The sunlight helps us truly see the beauty all around us and in each other-- including our unique individuality and the beauty of families and groups, whatever size... It also warms our hearts and minds to learn and grow together and as individuals. Beautiful!!



**#69 FLAG DESCRIPTION:** (OPTION 2)



**#70 FLAG DESCRIPTION:** This is the second design I've submitted. The wheat in the center of the flag is transitioning from wheat to a circuit. It parallels how Lehi has transitioned from an agricultural town to a technological hub. The green on the ground uses the Lehi green we currently use. The white in the center is the same as the Utah flag, as well as the hexagon shape in the center. The blue on the top represents the sky and technological advancement. This is my second submission.



**#71 FLAG DESCRIPTION:** A representation of Lehi as seen from Traverse Mountain, the verdant, green plain surmounted by the sky and mountains in shades of blue, with a defining streak of white representing the snow, clouds, and Lehi's spiritual origins and prowess.



**#72 FLAG DESCRIPTION:** This redesign of our city flag embodies a rich narrative reflecting the past, present, and future trajectory of our beloved Lehi. The predominant white hue pays homage to the majestic peaks that crown our landscape, instilling a sense of tranquility and unity within the valley below. These towering summits not only serve as a visual beacon but also stand as a testament to our region's pioneering spirit, notably exemplified by the innovative strides of our burgeoning tech sector nestled amidst the Silicon Slopes. Complementing the celestial white, the blue symbolizes the azure expanse of Utah Lake, a vital lifeline for our community. This serene blue hue serves as a dual emblem, representing both our unwavering commitment to safeguarding our natural resources, particularly water, and the deep-rooted trust and solidarity fostered among Lehi's diverse populace. Embracing the flag's center, the golden wheat interwoven with intricate circuitry motifs epitomizes the economic evolution that has defined our city's narrative. From the agrarian heritage embodied by bountiful harvests to the industrious endeavors epitomized by the historic Lehi Roller Mills, and onwards to the cutting-edge innovations of contemporary tech giants like IM Flash, this amalgamation encapsulates the enduring prosperity and ingenuity that characterize Lehi's economic landscape. In essence, our city flag serves not merely as a symbol but as a poignant reflection of Lehi's enduring legacy—a testament to its resilience, innovation, and unwavering commitment to fostering a community that transcends the bounds of time and tradition. Indeed, it stands as a proud affirmation of our city's cherished motto: "A Good Place to Live."



**#73 FLAG DESCRIPTION:** The main portion of the flag is a wheat kernel, that's transitioning to a circuit board, representing Lehi's transition from an agricultural community to a technology hub. The back features a mountain range similar to the Utah State flag, to connect it, and uses colors from the current Lehi flag palette.



**#74 FLAG DESCRIPTION:** The green at the bottom is grass & Wasatch front. The blue at the top is the sky. The yellow is the sun. The pioneer wagon represents the pioneers that settled here.





**#75 FLAG DESCRIPTION:** The mountain slopes have always defined Lehi for me. Especially considering the "silicon slopes" aspect of our city. The upside down "L" shape, represents both the "L" in Lehi and the beautiful mountains that define our fair city.



**#76 FLAG DESCRIPTION:** My Lehi roots run wide and deep all the way back through my great-great-great grandfather and Lehi's founder, David Evans. I was born and raised here, and I have returned to raise my own children in this beautiful city. When I think of my hometown, I think of the view from my childhood backyard; green sod farms and purple mountains in the summer, and snowy landscapes through the winter. I think of my pioneer ancestors who cultivated this land. I think of hard-working farmers in overalls, like my grandpa and my dad. I think of new thriving businesses and families. In my flag design I combined all these elements to represent the past, present, and future of Lehi City. Color Green: vitality / economy / farmland Blue: trust / loyalty / mountains White: peace / snow Symbols Blue Triangle: mountain peak Spokes: pioneer wagon wheel / (inward) people converging to Lehi from every corner / (outward) economic growth and production of the city.



**#77 FLAG DESCRIPTION:** Green represents the pioneers and farmers who built the foundations of our city. The blue and white represent our connection with the United States, and the hexagons represent our connection to Utah by incorporating similarities with the new Utah flag. This flag is not the 4:3 ratio; instead, it is the same ratio as the new Utah flag. I did this because this flag will match the Utah flag when they fly alongside each other. ---Note: I can provide the flag as vector image ([https://en.wikipedia.org/wiki/Vector\\_graphics](https://en.wikipedia.org/wiki/Vector_graphics)), which is infinitely scalable.



**#78 FLAG DESCRIPTION:** The green represents the land of Lehi from the lowest point of Utah Lake on the south, to the highest point near Point of the Mountain on the North. Green also represents the pioneers and farmers who built the foundations. The blue represents the future. It also represents the heavens, vigilance. Likewise, with the white, it also represents Lehi's connection to the United States. The white stripe represents the motto of Lehi City: "Pioneering Utah's Future." It is the path Lehi must forge to the future; it **(#78 CONTINUED)** goes forward to represent our drive to the future, and it goes up into the blue to represent our intention to make the future better than the present. The hexagons represent Lehi's connection to Utah. In addition, the hexagons are colored opposite to represent that Lehi's future is connected to its past, and that as we move into the future, we will take a piece of the past with us. This flag is not the 4:3 ratio; instead, it is the same ratio as the new Utah flag. I did this because this flag will match

the Utah flag when they fly alongside each other. ---Note: I can provide the flag as vector image ([https://en.wikipedia.org/wiki/Vector\\_graphics](https://en.wikipedia.org/wiki/Vector_graphics)), which is infinitely scalable. In addition, this flag also looks excellent if both hexagons are turned white, and I am willing to provide an original image on request, so that is an option.



**#79 FLAG DESCRIPTION:** It's hard to pinpoint what makes Lehi "Lehi" AND capture that in a simple image, because there are so many great things about it. I wanted to represent Lehi geographically to make it a little simpler on myself. Green and blue lend themselves naturally to a scenic landscape, so I found that was a good place to start. The views of the valley from Lehi are so breathtaking in every season. Lehi acts as a bridge between two valleys and two concepts: valuing our beautiful traditions while at the same time looking forward to what the future will bring to our quality of life. Near the top, the "winds of change" blowing from North to South represent both the atmospheric wind we often experience here (and the parachuters love!) as well as the technological advances we support in our city. The bridge has fenceposts, meant to be reminiscent of the agricultural properties that make up the original heart of Lehi. Our green hills don't stay snowcapped as long as the mighty peaks to either side of us, but they are a gentle slope that our city nestles next to, picturesque as the city twinkles in the fading sunset light. Below everything is Utah Lake. I'm proud to live here, I feel safe here, and I hope my children can always happily tell people "I grew up in Lehi!" for the rest of their lives!



**#80 FLAG DESCRIPTION:** My flag is showing that us residents of Lehi, Utah can work together which is what the hands in the center are showing. I used the two Lehi colors, blue and green.



**#81 FLAG DESCRIPTION:** (OPTION 1) A pioneer bravely leads others into the future. This flag celebrates the pioneers of Lehi, Utah. This flag depicts a wagon wheel at the intersection of the green slopes of the Wasatch and Oquirrh Mountain ranges or the Northern edge of Utah County, looking Northward, under a deep blue sky. The darker green triangle on the right represents the slightly further away Point of the Mountain, and the slightly brighter triangle on the left represents a slightly closer Latimer Point, as if standing on the northern shores of Utah Lake looking North. The white wagon wheel boldly represents Lehi's pioneers—both historical and current—as well as Lehi's pioneering spirit of the past, present, and future. (alternate submission) The wheel rolls down the mountain and up the mountain in a loop of progress and improvement. The deep blue sky represents the promise of opportunity. The mountains are green to represent Lehi's close ties to the earth and its roots as a farming heritage.



**#82 FLAG DESCRIPTION:** (OPTION 2)



**#83 FLAG DESCRIPTION:** The Mountains represent the mountains around us and Traverse Mountain, and the Point of the Mountain. The city represents our industry and our growth and expansion. The water tower is Thanksgiving Point.



**#84 FLAG DESCRIPTION:** The mountains represent the snowcapped mountains and the beauty of winter in Utah and the bird flying over the mountains represent Utah's state bird the California seagull and the circles represent the connection of neighbors and family in Utah.



**#85 FLAG DESCRIPTION:** You guys wanted simplicity, so I tried my best, the bee represents teamwork and unity.



**#86 FLAG DESCRIPTION:** My design is half blue on top and half blue on top and half green on bottom. I put the sun in the middle along with two straws of wheat along the side of the sun. The wheat resembles the farms in Lehi and the sun resembles the amount of sunlight we get here in Lehi.



**#87 FLAG DESCRIPTION:** I kept the colors from the previous flag and included the thanksgiving point water tower because I feel like thanksgiving point is an important part of Lehi.



**#88 FLAG DESCRIPTION:** This is supposed to represent The Jordan River with all the original Lehi colors.



**#89 FLAG DESCRIPTION:** The mountains symbolize traverse mountain, and Icon in Lehi. The red, white, and blue for the United States of America to remember our country in our day to day lives, and the sunset to show our beautiful mornings and evenings we have in Lehi. And the eight stars also represent our country, and the eight stars also represent the first number in our zip code.





**#90 FLAG DESCRIPTION:** My design depicts mountains which symbolize the point of the mountain. It also depicts a silo representing the Lehi Roller Mills, there is also a star that ties into our countryside flag.



**#91 FLAG DESCRIPTION:** The flag's background colors are blue and green, keeping with Lehi's theme and meaning stability and prosperity. The wagon wheel is a reminder of our pioneering past, while the circle also symbolizes us being united.



**#92 FLAG DESCRIPTION:** This image represents Lehi in the pride and glory of our pioneer heritage as well as the farms and horse riders that made this city possible. And of course, our iconic and traditional Lehi round-up that is the heart of our city. The colors of Lehi's natural blue and green, as well as white representing our snowy lands.



**#93 FLAG DESCRIPTION:** In Lehi, there's lots of beautiful mountains and you can see the sun either rise or set.



**#94 FLAG DESCRIPTION:** What I tried to go for on my design is rolling hills and maybe a little bit of mountain in it and I feel like we have a lot of them here



**#95 FLAG DESCRIPTION:** The Mountains represent how we came through the mountains to create Lehi and the lake and stars represent where we are, and the middle star is where we are, and the number of stars is 6 like how we are the 6th Utah city.



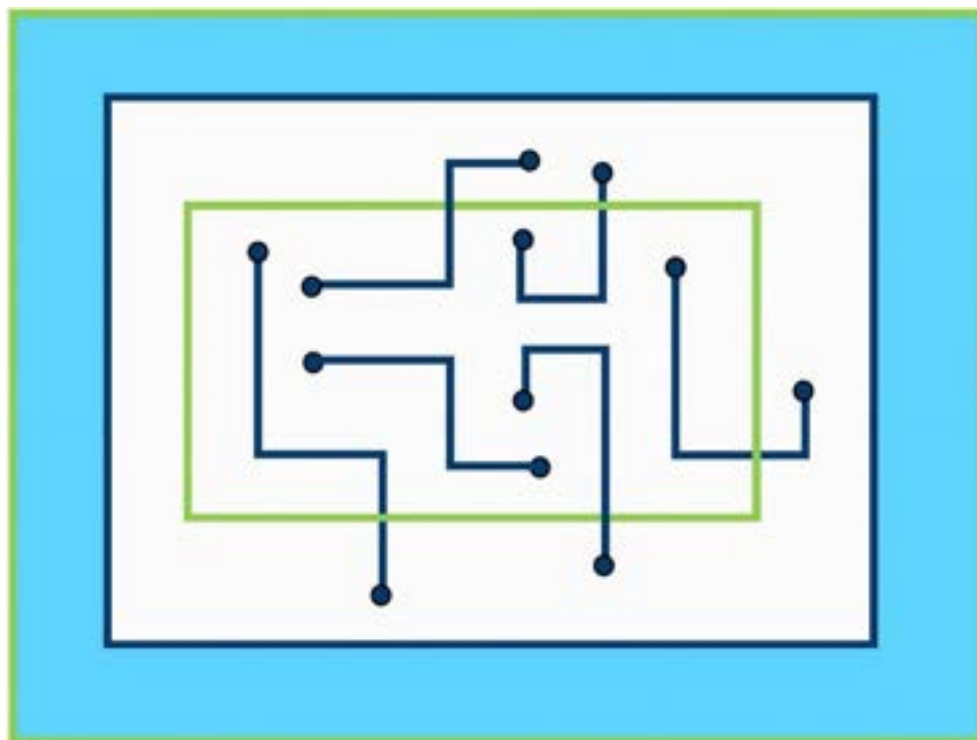
**#96 FLAG DESCRIPTION:** My design is a tree growing out of a book. The book represents the focus on knowledge in Lehi, while the tree represents the growing families and communities, along with the lush, beautiful plants.



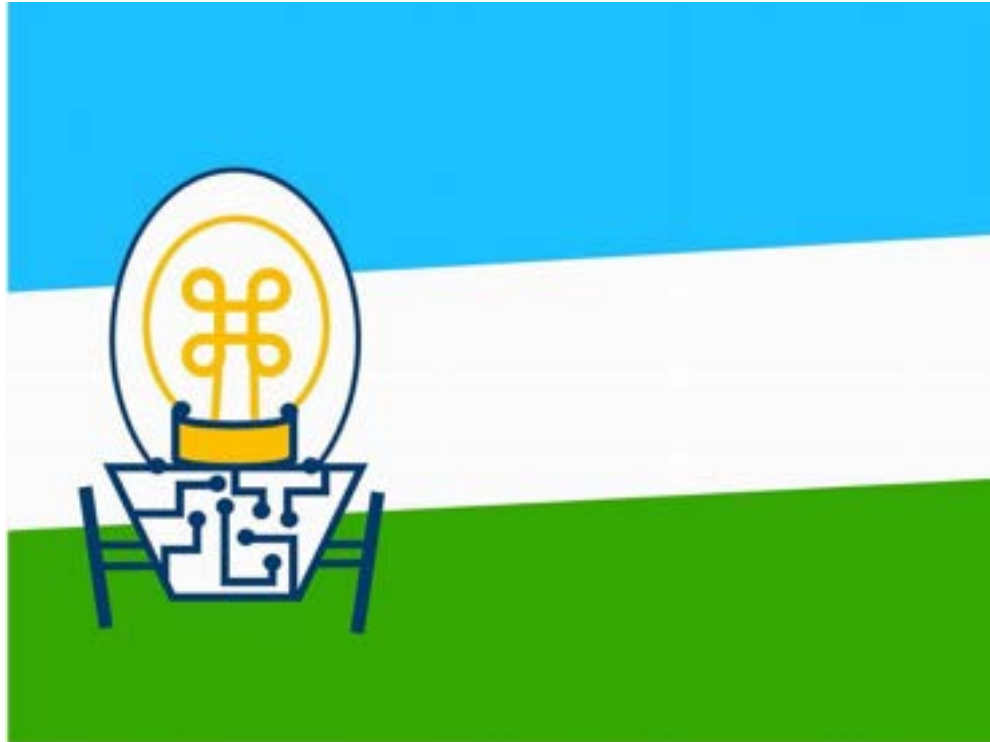
**#97 FLAG DESCRIPTION:** My design was inspired by the majestic view of Lehi, characterized by its towering mountains and rolling hills. These natural features symbolize not just the physical elevation of our city, but also its growth and progress. Over the past 15 years, Lehi has experienced exponential growth, transforming from a small town into a vibrant community. The mountains on the flag represent our resilience, strength, and determination to reach new heights. The color palette of blues and greens reflects the natural beauty of our surroundings (also Lehi City's colors) while the golden sun rising behind the peaks symbolizes a new dawn and a bright future for Lehi.



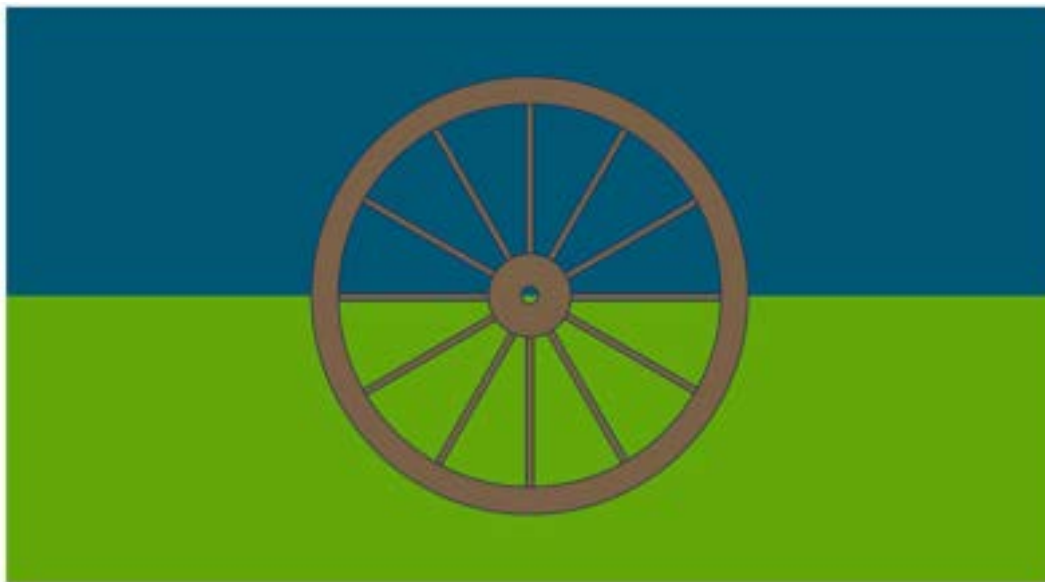
**#98 FLAG DESCRIPTION:** The flag incorporates Lehi city's current blue and green motifs as well as silicon gray. The green bar at the bottom represents Lehi's hard-working, agrarian, pioneer roots as the foundation of its success. The gray mountains on each side converging to a valley represent the Wasatch and Oquirrh mountain spurs. They are colored gray to highlight Lehi's place as Utah's Silicon Slopes. The silicon gray star represents Lehi as a "rising star" through its role as a center of technology and innovation. The blue bar at the top has multiple meanings. It can represent the strength that came to the city as the pioneers looked heavenward for their code of ethics. It can also represent the city's role as a beacon of excellence in both business and ethics and serve as a reminder that Lehi's star will continue to rise as it holds fast to the principles that have made it great.



**#99 FLAG DESCRIPTION:** The concept of this design embraces the expansion of growth like a cyber corn maze. The image design of the Cyber Lehi Chip captures this symbolism with our own hidden LEHI maze within the image. Firmly embedded in our community of pioneering our way to the future.



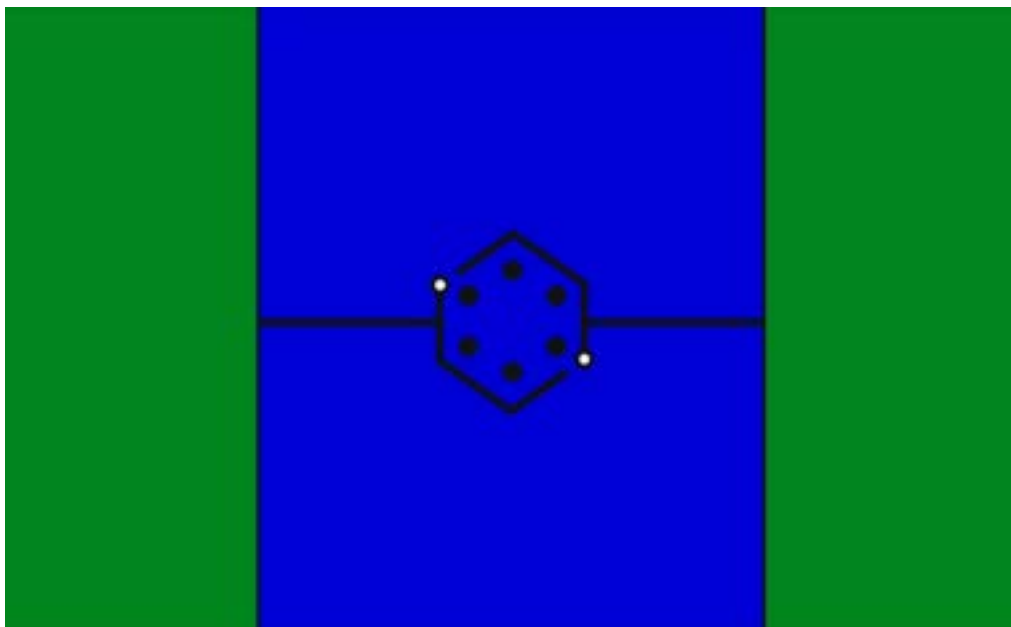
**#100 FLAG DESCRIPTION:** The concept of this design embraces our pioneer heritage as we embark into the future of computer technology. The image design of the Cyber Wagon captures this symbolism and voyage with blue skies and green fields ahead of us.



**#101 FLAG DESCRIPTION:** Blue for the skies above, green for the alfalfa fields below. A wooden wheel paying homage to the Mormon handcart pioneers who founded the town.



**#102 FLAG DESCRIPTION:** The flag has a wagon wheel in the center to show our pioneer heritage, with six spokes to symbolize our status as the 6th city in Utah. The wagon wheel also doubles as sunshine with the sun rising over a symbol of our iconic mountain range. The flag also features a grain of wheat, that symbolizes our crops, and the roller mills as a part of our city heritage and agricultural history. The colors from the logo (blue, green, white) are prominent, with the yellow from the Utah state flag added to tie back to the status as the beehive state. (I did use four colors instead of three, but so does the Utah flag).



**#103 FLAG DESCRIPTION:** A vertical triband flag featuring 1/2 green to represent the agricultural past of Lehi, and 1/2 blue to represent the technological future of Lehi. A black hexagon represents the advanced manufacturing capabilities of the city, while emulating the shape of the beehive hexagon symbol on the Utah state flag.



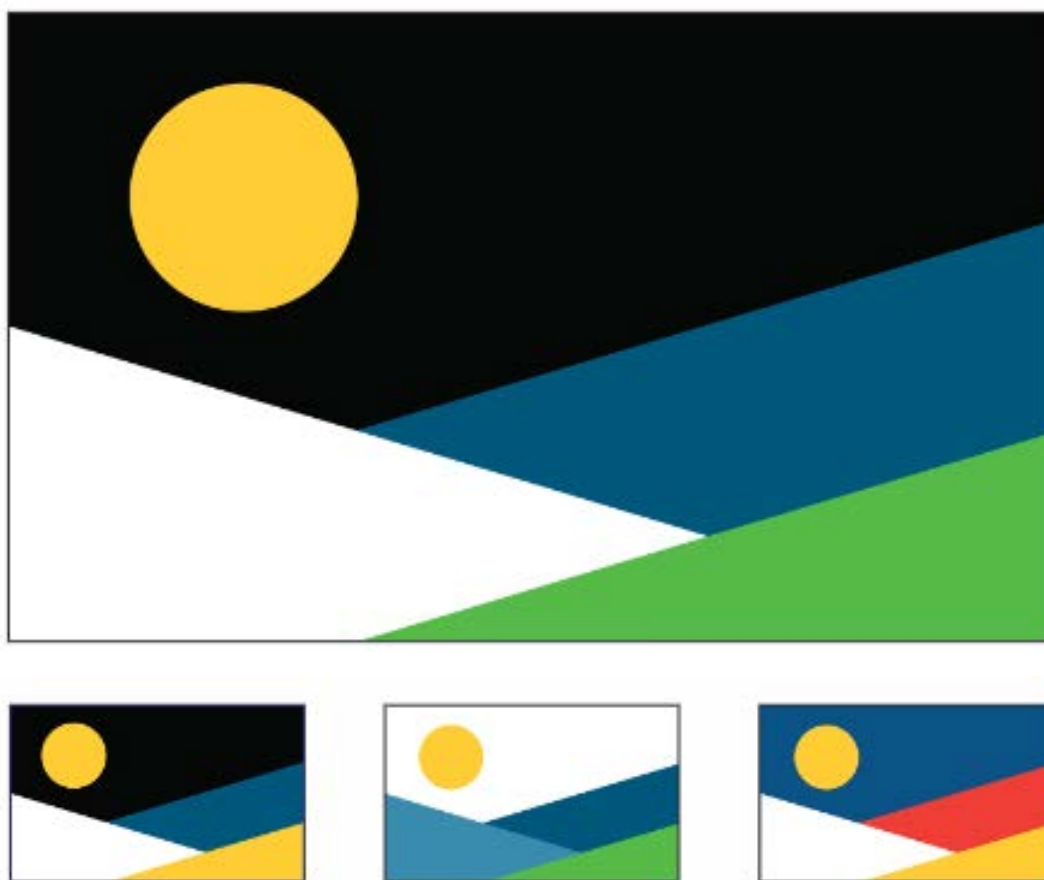
**#104 FLAG DESCRIPTION:** Lehi sits at the crossroads of Utah County. The mountain imagery with crossing paths represents our central geographic location as well as the economic and social importance that our city has on our surrounding area. The 3 white stars represent our pioneer past, our central role within our surrounding communities now, and a bright hope for the future.



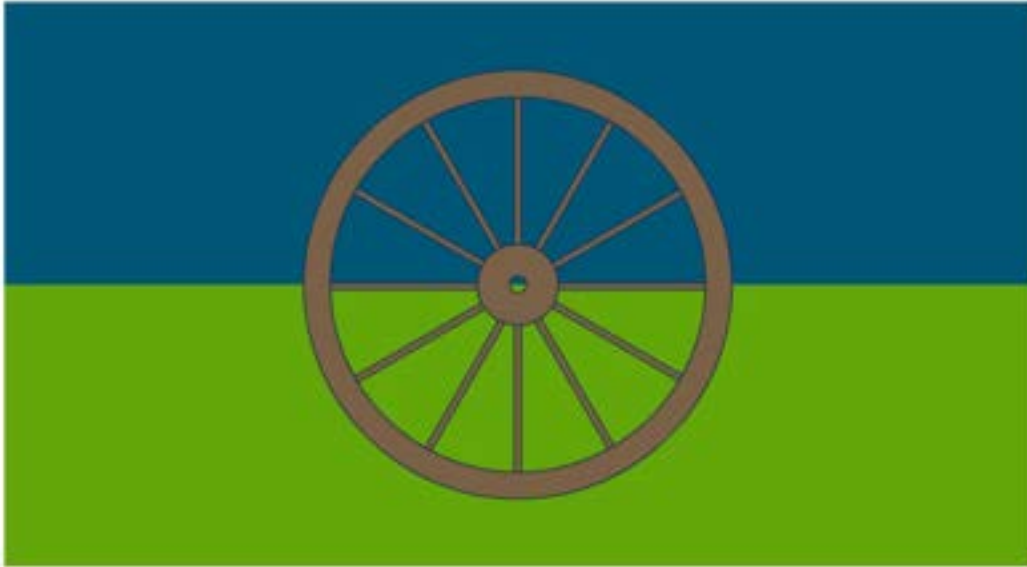
**#105-#108 FLAG DESCRIPTION:** "The Traverse Star" — a Point of pride for the Utah Valley. This design is set in gold, blue, black, and white, with a six-pointed star in honor of Lehi's historic settlements: each point represents one of Dry Creek, Evansville, Snow's Springs, Sulphur Springs, modern Lehi City, and the Utah



Valley’s pre-pioneer Indigenous communities. The intersecting “woven slopes” design symbolizes Lehi’s many, converging ways of life—representing rich and interconnected histories of farming, industry, technology, and culture. The design also comprises a rendering of the three mountain ranges that embrace Lehi—the White, Oquirrh, and Wasatch—alongside the pristine waters of Utah Lake and the Jordan River. This new flag epitomizes Lehi’s past and present, while eagerly looking toward a prosperous new frontier. See also: selected alternatives.



**#109-#112 FLAG DESCRIPTION:** "Mountain Moon" — a new flag for Lehi City. This design is set in green, blue, black, and white, with a golden harvest moon rising over the Utah Valley (All colors come from the Lehi City Brand Usage & Style Guide). The intersecting “woven slopes” design symbolizes Lehi’s many, converging ways of life—representing rich and interconnected histories of farming, industry, technology, and culture. The design also comprises a rendering of the three mountain ranges that embrace Lehi—the White, Oquirrh, and Wasatch—alongside the pristine waters of Utah Lake and the Jordan River. Through timeless imagery and contemporary style, this flag encapsulates Lehi’s history, honors its heritage, and looks to a promising new horizon. See also: selected alternatives.



**#113 FLAG DESCRIPTION:** (OPTION 1) Blue for the skies above, green for the alfalfa fields below. A wooden cartwheel paying homage to the city's founding handcart pioneers. This is a variation of the design I submitted earlier; the wheel is wood colored as opposed to white.



**#114 FLAG DESCRIPTION:** (OPTION 2)



**# 115 FLAG DESCRIPTION:** The blue and green colors, as recommended by Mayor Johnson, reference our agricultural past and our technological future. The leaf in the center with the veins showing a circuit board motif similarly call to mind the confluence of agriculture and technology. A lighter blue and green were specifically chosen to give the flag a bright vibrant feel, but the green also matches the current color palette of the city logo. The bands of color were specifically placed with the blue on the bottom to represent Utah Lake and the Jordan River on our borders and the green on top representing the mountains that surround us and specifically the mountains touching Lehi along our northern border. The white space in the middle, forms arrows pointing up and down representing the growth of the city and its residents. The horizontal white band represents I-15 bisecting the city. The hexagon is inspired by our new state flag.



**#116 FLAG DESCRIPTION:** The design of the Lehi City flag is a symbolic representation of the city's identity and values. At its heart is a white sego lily, Utah's state flower, signifying purity, peace, and the natural beauty of the region. Encircled by a vibrant green hexagon, the lily is set against a blue center, representing **(#116 CONTINUED)** unity and harmony within the community. Emerging from the center is a majestic blue mountain, symbolizing the rugged terrain and scenic landscapes that define Lehi's surroundings. Flanking the mountain are two rectangles, each spanning from top to bottom, representing the city's commitment to

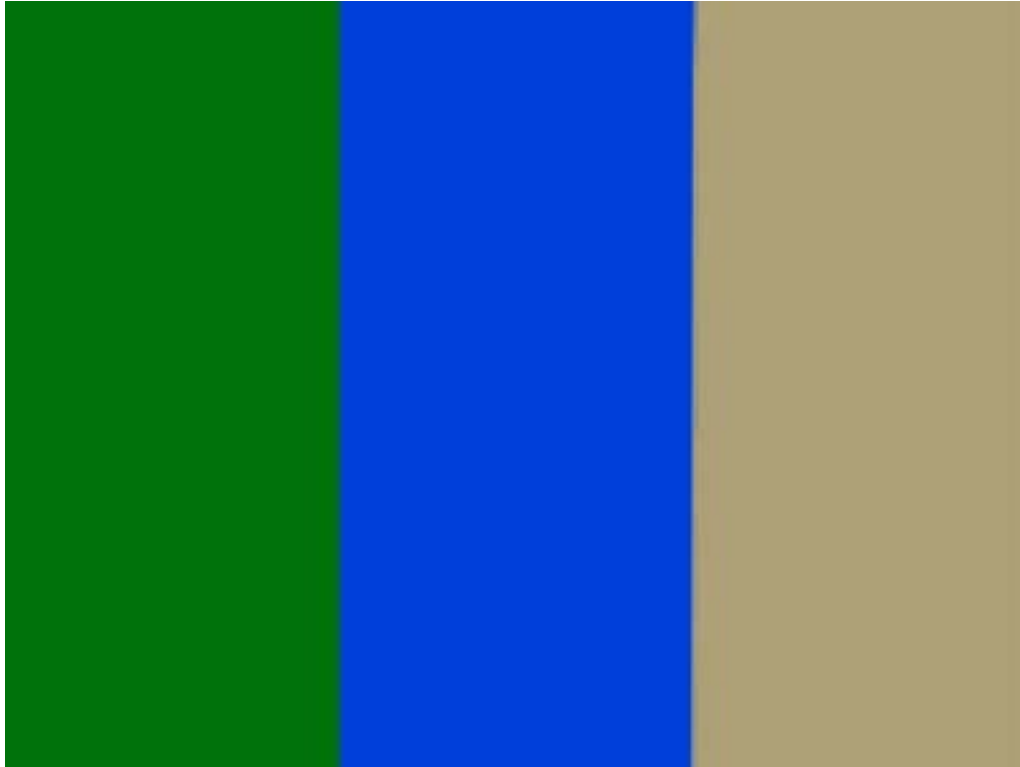
progress and prosperity. The remaining white background, shaped like a ribbon, symbolizes the city's interconnectedness and resilience, as well as its forward-looking vision. Together, these elements encapsulate the spirit of Lehi, honoring its heritage while embracing its future with optimism and purpose.



**#117 FLAG DESCRIPTION:** A simple tricolor representing the landscape reminiscent of flags from Estonia and Ukraine. The blue at the bottom represents Utah Lake, the green center represents the farm fields that previously covered the surrounding area, and the white represents the snow-covered peaks of Mount Timpanogos, Lone Peak and the Wasatch Mountains. \*Note that I used flag-creator.com, but this is an original design created by me.



**#118 FLAG DESCRIPTION:** Liahona. The yellow circle represents unity with a point guiding all towards prosperity. Cyan represents our youth and energy, being one of the youngest cities in the nation.



**#119 FLAG DESCRIPTION:** Lehi's journey. The colors represent Lehi's journey in the Book of Mormon from east to west. Tan represents tradition. Blue liberty. Green providence.



**#120 FLAG DESCRIPTION:** representation: green: the grassy mountains white: snow and purity blue waves: the Utah Lake blue stars: Utah and Lehi water tower represents Lehi.



**#121 FLAG DESCRIPTION:** My image defines known activities, historic landmarks, and what makes Lehi a fantastic city. The mountains represent the mountains that line Wasatch Front and are known for their hikes and skiing resorts. The two buildings to the far left and right of the flag represent Lehi Roller Mills, the most notorious and historic building in Lehi. It's one of the most known buildings, plus the oldest. It carries a wonderful history. The compass represents the pioneers that arrived in Lehi and found it, paving the way for future residents. Finally, the tower in the middle of the flag represents Thanksgiving Point Tower. Within **(#121 CONTINUED)** the area of Thanksgiving Point, it holds rich history like dinosaurs. It captures the attention of the youth with the Museum of Natural Curiosity. It holds beautifully grown flowers and plants of all sizes with its botanical gardens. In short, Thanksgiving Point has something for everybody and unites them all with common interests, which is what Lehi should be about.



**#122 FLAG DESCRIPTION:** This flag is a simple extension of the existing city logo that has been used for the past several years. It capitalizes on the existing imagery and familiarity, yet uses it in a new and different way, making the flag design simultaneously familiar and new - and uniquely Lehi!



**#123 FLAG DESCRIPTION:** There is a water tower to represent the water tower at thanksgiving point.



**#124 FLAG DESCRIPTION:** In Lehi, there's lots of beautiful mountains and you can see the sun either rise or set.



**#125 FLAG DESCRIPTION:** It represents our valley, family and community. Together we stand as a team. We value friendship, we look out for each other and treasure our city, the place where memories are made.