

NOTES

i. Very Low Density Residential Agriculture (VLDRA): applicable current Zoning Districts, depending on the area, include R-1-22 and A-1. RA-1 Zone may be applied to existing properties in VLDRA of 2 acres or smaller.

ii. Very Low Density Residential (VLDR): applicable current Zoning Districts, depending on the area, include R-1-15, RA-1, and R-1-22.

iii. Low Density Residential (LDR): applicable current Zoning Districts, depending on the area, include R-1-8, R-1-10, and R-1-12.

iv. Medium Density Residential (MDR): applicable current Zoning District is R-2.

v. High Density Residential (HDR): applicable current Zoning District is R-3.

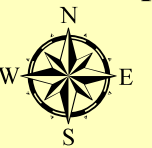
vi. Environmentally Sensitive Area (ESA): applicable current Zoning District is A-5.

*1 - The Traverse Mountain Area Plan designates this area as Highway Commercial, but also serves as a receiving zone to transfer residential units from other districts as specified in the plan.

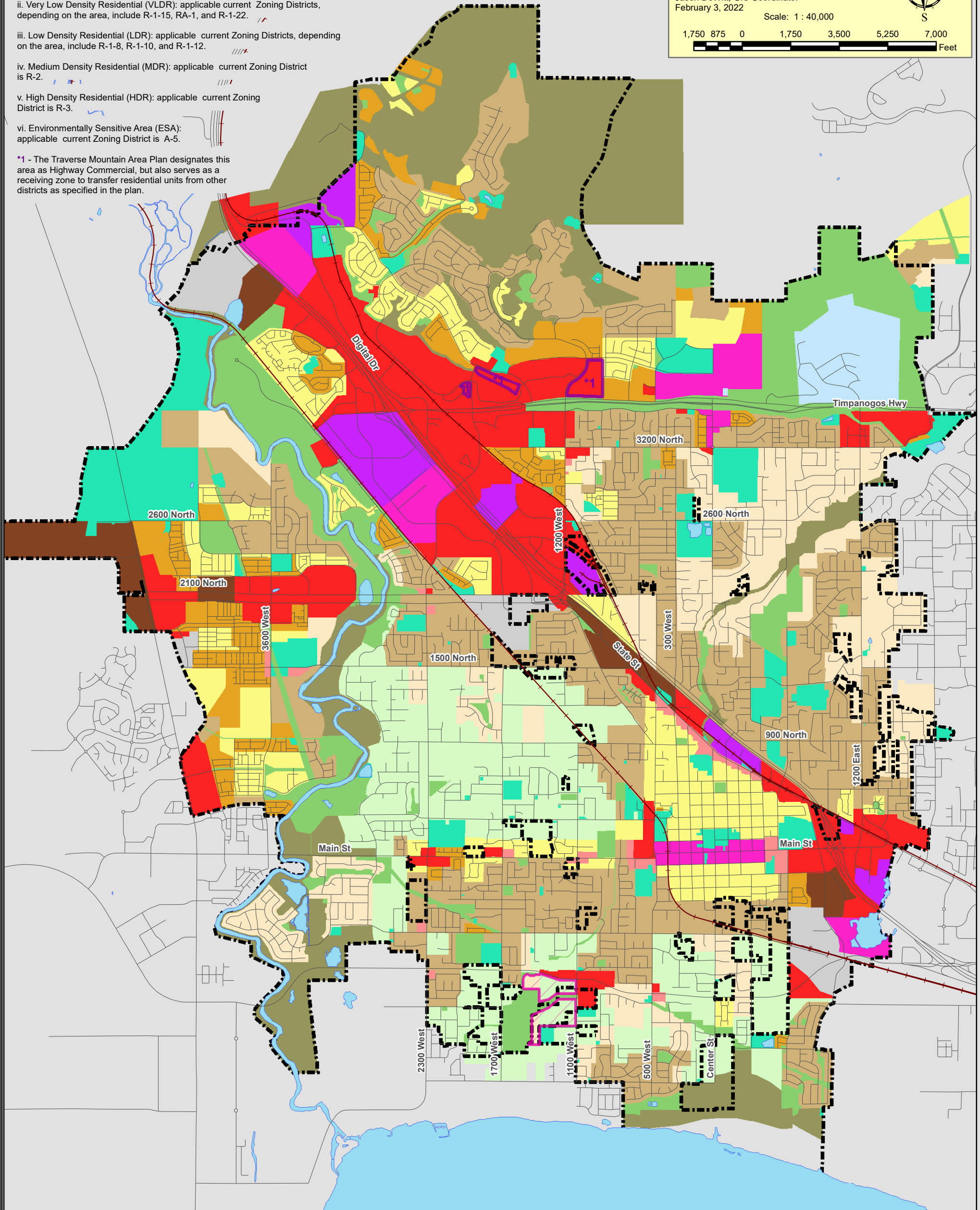
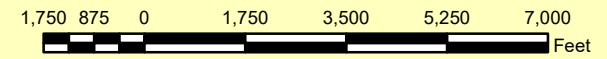
Lehi City General Plan Land Use Map

Date Adopted: October 25, 2011
Last Amended: January 25, 2022

Produced by Lehi City GIS
Jason DeWitt, GIS Coordinator
February 3, 2022



Scale: 1 : 40,000



Legend

- | | | |
|--|-------------------------------------|--------------------------------------|
| Railroads | VLDR - Very Low Density Residential | LI - Light Industrial |
| Roads | LDR - Low Density Residential | T/M - Technical / Manufacturing |
| Highway Commercial | MDR - Medium Density Residential | TOD - Transit-Oriented Development |
| Mixed Use Village Overlay | HDR - High Density Residential | MU - Commercial / Residential |
| Water Bodies | C - Commercial | OS - Open Space |
| Lehi City Boundary | C-H - Commercial Heavy | ESA - Environmentally Sensitive Area |
| VLDRA - Very Low Density Residential Agriculture | NC - Neighborhood Commercial | PF - Public Facilities |