

Creating Waterwise Park Strips



What you will learn:

- Why lawn in the park strip is a problem
- The 5 steps to reclaim your park strip
- Park strip maintenance
- Park strip plants
- Park strip examples



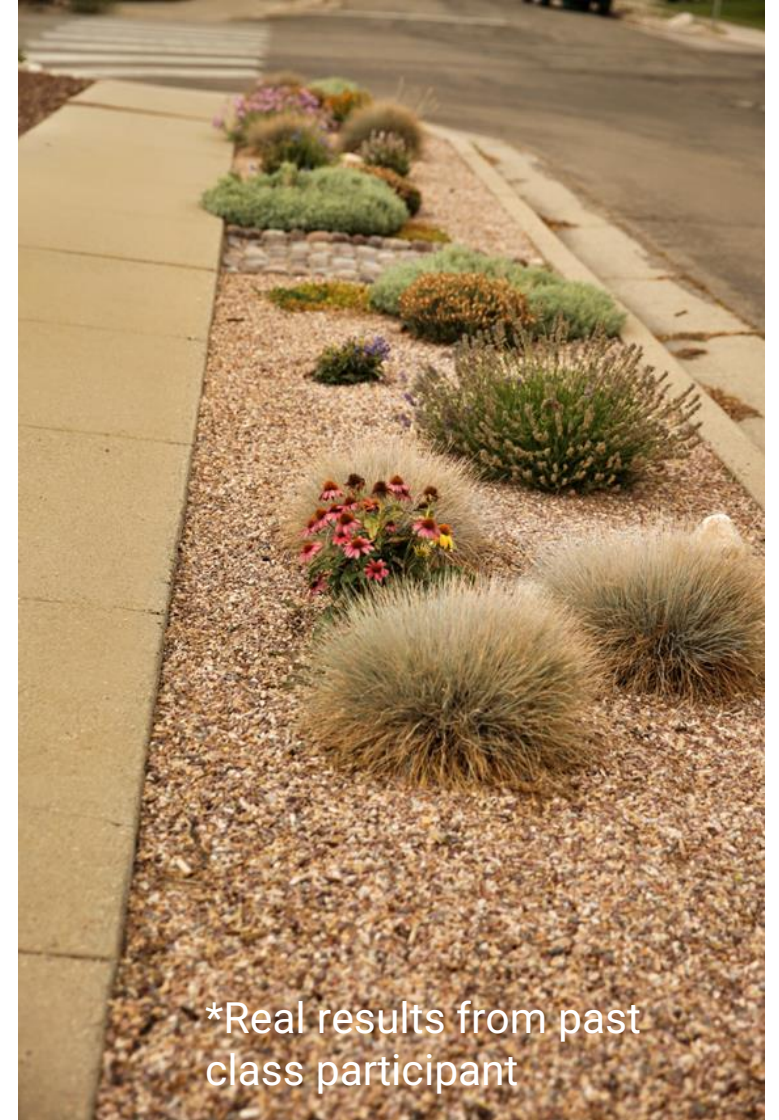
Typical Utah Front Yard



Localscaped Front Yard



Flip Your Strip



Park Strip Problems: **Water Waste**

Sprinklers are
not designed to
water areas
less than
8' wide



Park Strip Problems: **Water Waste**

Average lawn park strips use 7,000-10,000 gallons per season



Park Strip Problems: **Tree Roots**

Shallow roots
break
concrete
sidewalks



Park Strip Problems: **Extreme Climate**

Adjacent hot
surfaces bake
lawn



Park Strip Problems: Road Salt

Salts applied
in winter can
be damaging



Create Curb Appeal (literally!)



Lawn
Park Strip
(July)

Flipped
Park Strips

Lawn
Park Strip



*Real results from past
class participant

Ordinances & Best Practices: Ownership

- Owned by the city but maintained by residents
 - Check local regulations and codes
 - Homeowner's Associations may have requirements too
-

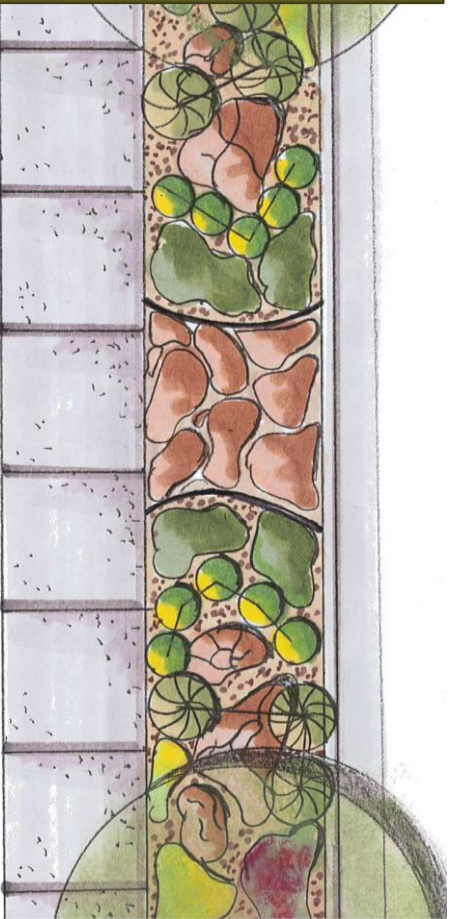
*Real results from past class participant



Steps to reclaim a park strip

1

Plan &
Design



2

Remove
Lawn



3

Install
Drip



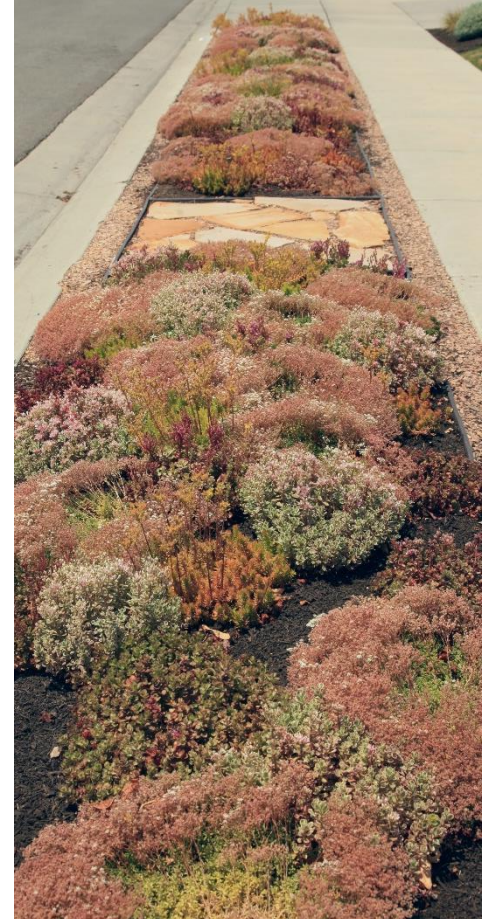
4

Add
Hardscape



5

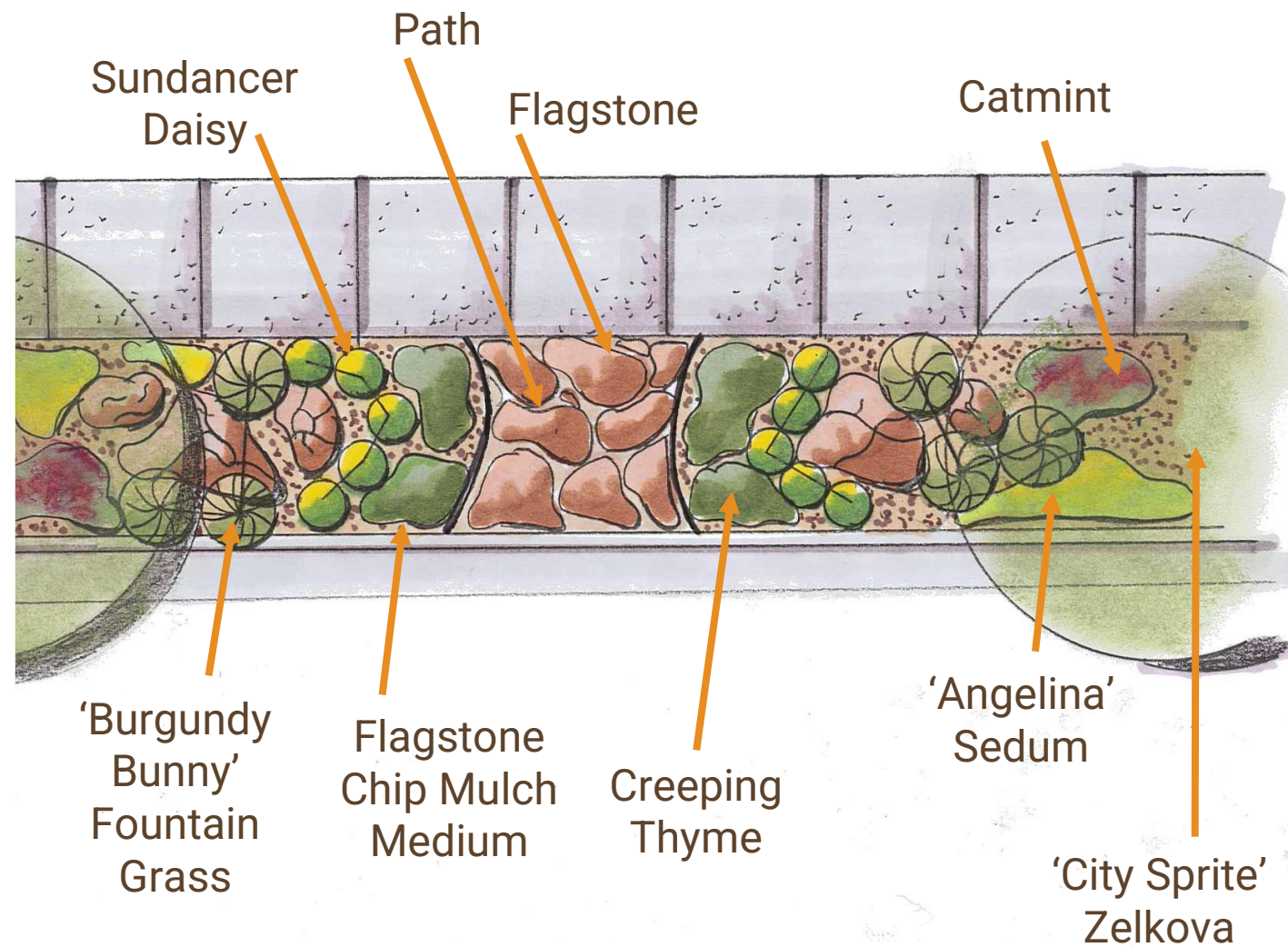
Plant &
Mulch



1

Plan & Design

- Paths, plants, and drip irrigation
- Proper plant selection is important
- Plants should be waterwise, salt tolerant, and tough



1

Plan & Design

Download Free Park Strip Plans from Localscapes.com Utahwatersavers.com

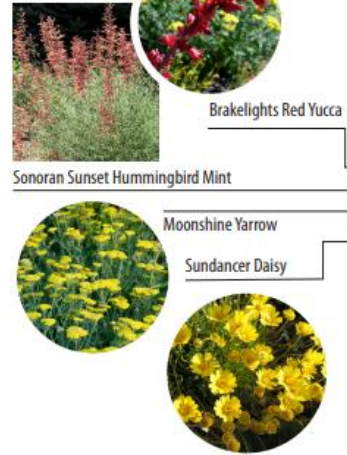
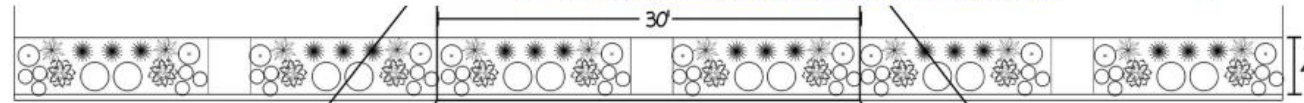


Utah Park Strip Design Plan



Lush with Less
High Density Perennial Design

Localscapes.com

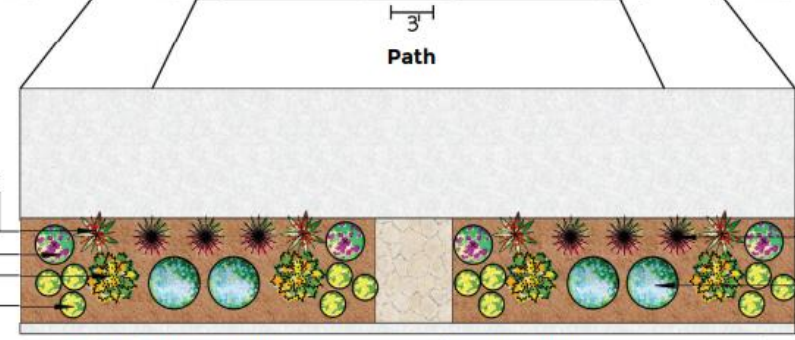


Brakelights Red Yucca

Sonoran Sunset Hummingbird Mint

Moonshine Yarrow

Sundancer Daisy



Blaze Little Bluestem



Walkers Low Catmint

Plant List

Qty	Botanical Name	Common Name
Ornamental Grasses		
6	Schizachryrium scoparium 'Blaze'	BLAZE LITTLE BLUESTEM
Perennials and Annuals		
4	Achillea Millefolium 'Moonshine'	MOONSHINE YARROW
4	Agastache cana 'Sinning'	SONORAN SUNSET HUMMINGBIRD MINT
12	Hymenoxys acaulis	SUNDANCER DAISY
4	Nepeta x faassenii 'Walkers Law'	WALKERS LOW CATMINT
Succulents		
4	Hesperaloe parviflora 'Perpa'	BRAKELIGHTS RED YUCCA

Plant quantities are for each 30 ft section.

This design is free to use. Please credit Localscapes.com in order to copy, or share the content. For Non-Commercial use. Do not change content.

2

Remove Existing Lawn

- Lawn needs to be killed down to the roots before removal
- This can be done with glyphosate (Roundup) or plastic sheets

Plastic Sheets



Herbicides



2

Remove Existing Lawn

- Lawn can be removed with a sod cutter or tiller
- Mark existing sprinkler heads with flags or sticks
- Be careful when removing lawn around existing trees

Sod
Cutter



Tiller

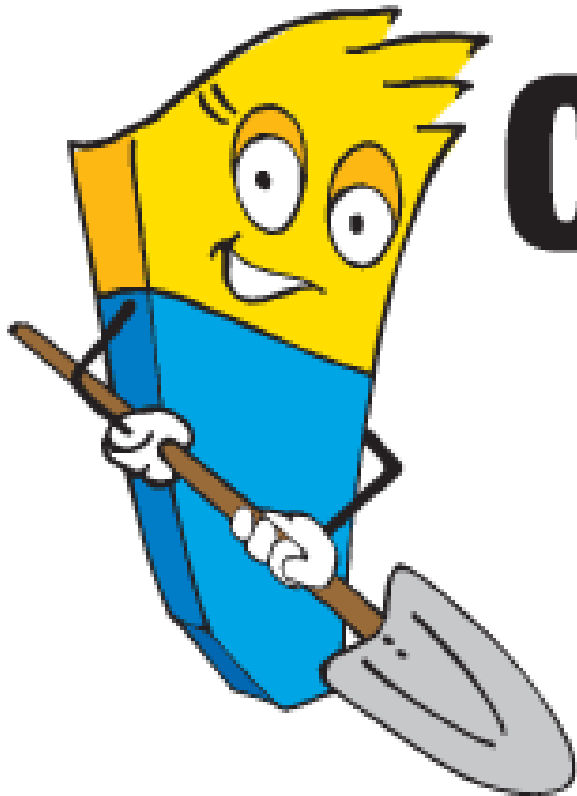


FREE utility line location service

Know what's below.



Call 811 before you dig.



BLUE STAKES OF UTAH
UTILITY NOTIFICATION CENTER, INC.

www.bluestakes.org

1-800-662-4111

2

Remove Existing Lawn

- Lawn and soil should be removed three to four inches below the sidewalk
- This will help to retain mulch in the park strip



4" Below
Sidewalk

3

Install Drip

- Park strips should use one type of drip irrigation, either in-line or point source
- Drip supplies water directly to the plant's roots
- Minimizes water waste

In-Line



Point Source



Drip Irrigate Park Strips

Use only one
type of drip in
the park strip



Find Localscapes Rewards and other rebates at:
UtahWaterSavers.com

Requirement
for:



Best Practice: Drip Irrigation

Micro-sprays and
bubblers do not
qualify as drip
irrigation



Eligible



Not
Eligible



Find Localscapes Rewards and other rebates at:
UtahWaterSavers.com



3

Install Drip

- It is best to run at least three rows of in-line drip in a park strip
- This will evenly water the plants as they grow



Best Practice: Filter and Pressure Reducer

Drip irrigation must
have a pressure
reducer and filter



Find LocalScapes Rewards and other rebates at:
UtahWaterSavers.com



Park strip irrigation



Sprinkler Valve:

- Used for lawn
- Spray sprinkler heads



Drip Irrigation Valve:

- Used for drip
- Includes filter and pressure reducer

Park strip irrigation



Sprinkler Head:

- Used for lawn
- Overhead sprinkler heads



Retrofit Head:

- Used for drip
- Includes filter and pressure reducer

Park strip irrigation

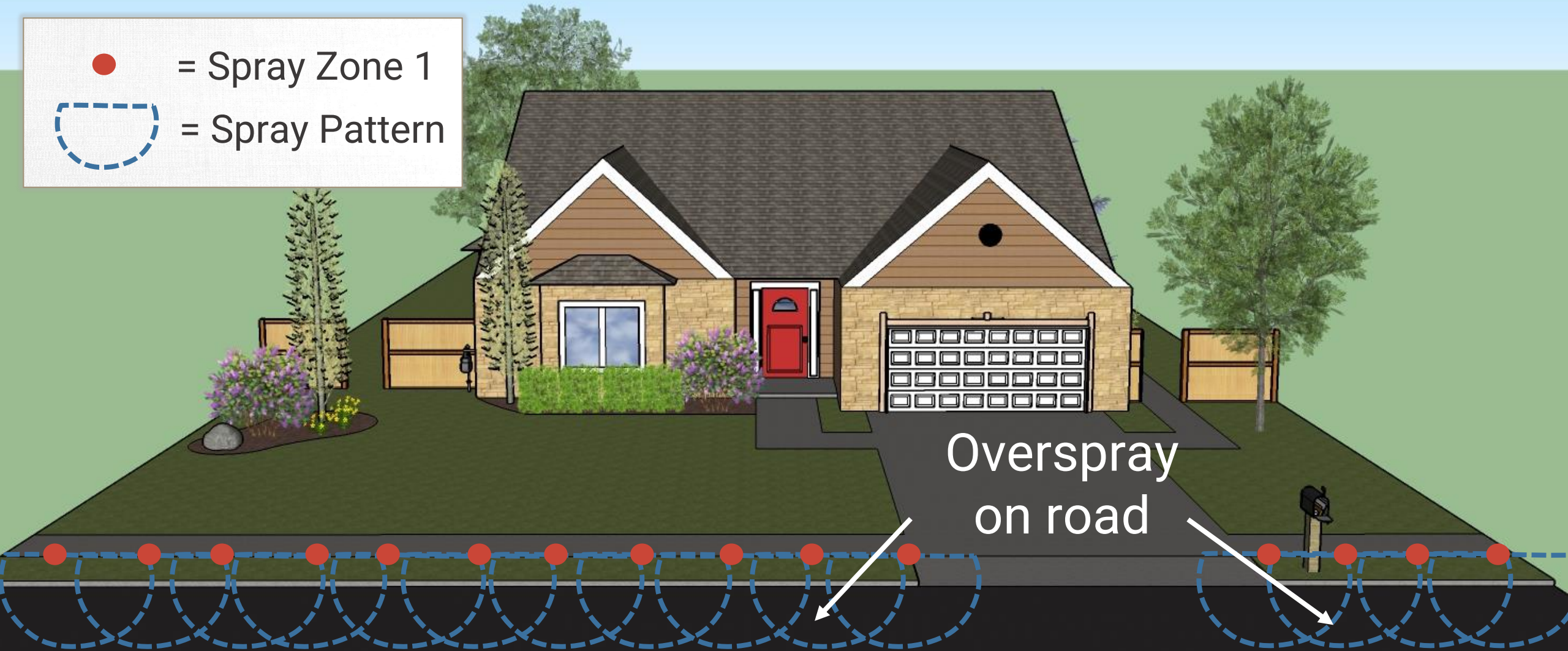
- Be sure to leave the filter accessible for maintenance and for the final visit



Park strip irrigation

● = Spray Zone 1

⌋ = Spray Pattern



Drip conversion

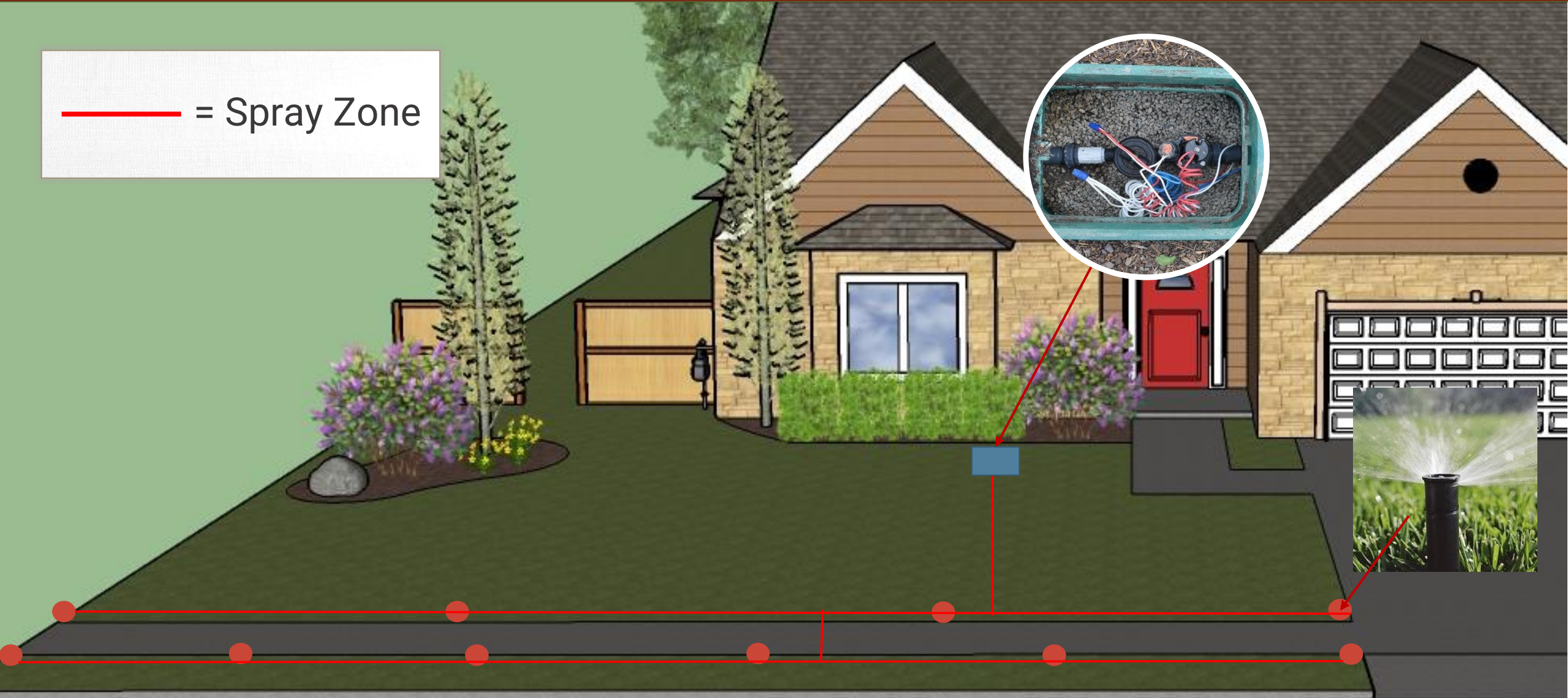
- = RETROFITTED Sprinkler Head
- = CAPPED Sprinkler Head
- = Drip Irrigation Tubing



TIP: No need to dig up all the old pipe, just cap off unnecessary spray heads.

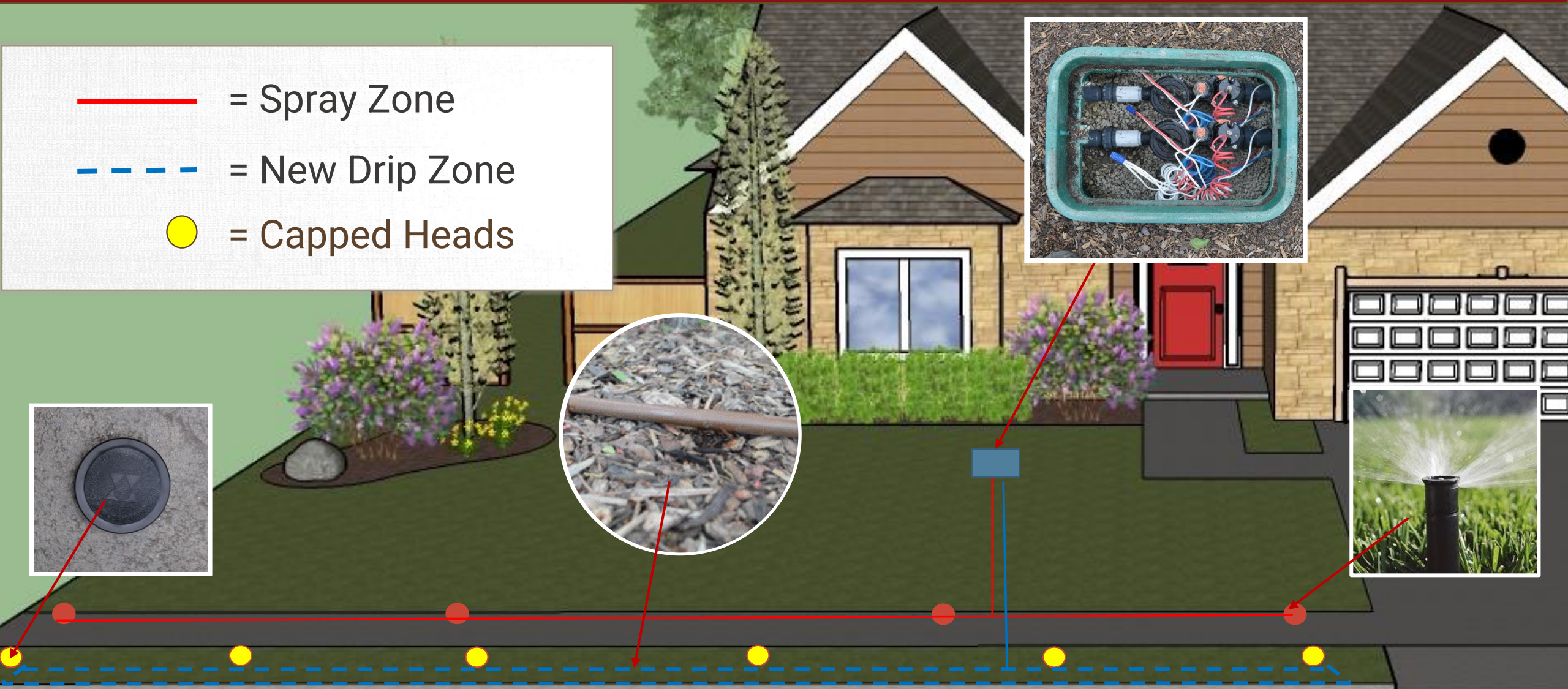
Typical irrigation

— = Spray Zone



Configuring the drip zone

-  = Spray Zone
-  = New Drip Zone
-  = Capped Heads



Existing Trees: Inline Drip

Create a square with inline drip around trees to ensure adequate water



4

Add Hardscape

- Create pass-through areas in the park strip
- Make sure the path is large enough for safe passage



Drip Lines & Hardscape:

Run drip underneath paths before they are installed

Use blank drip tubing and run it through a conduit



4

Hardscape Considerations

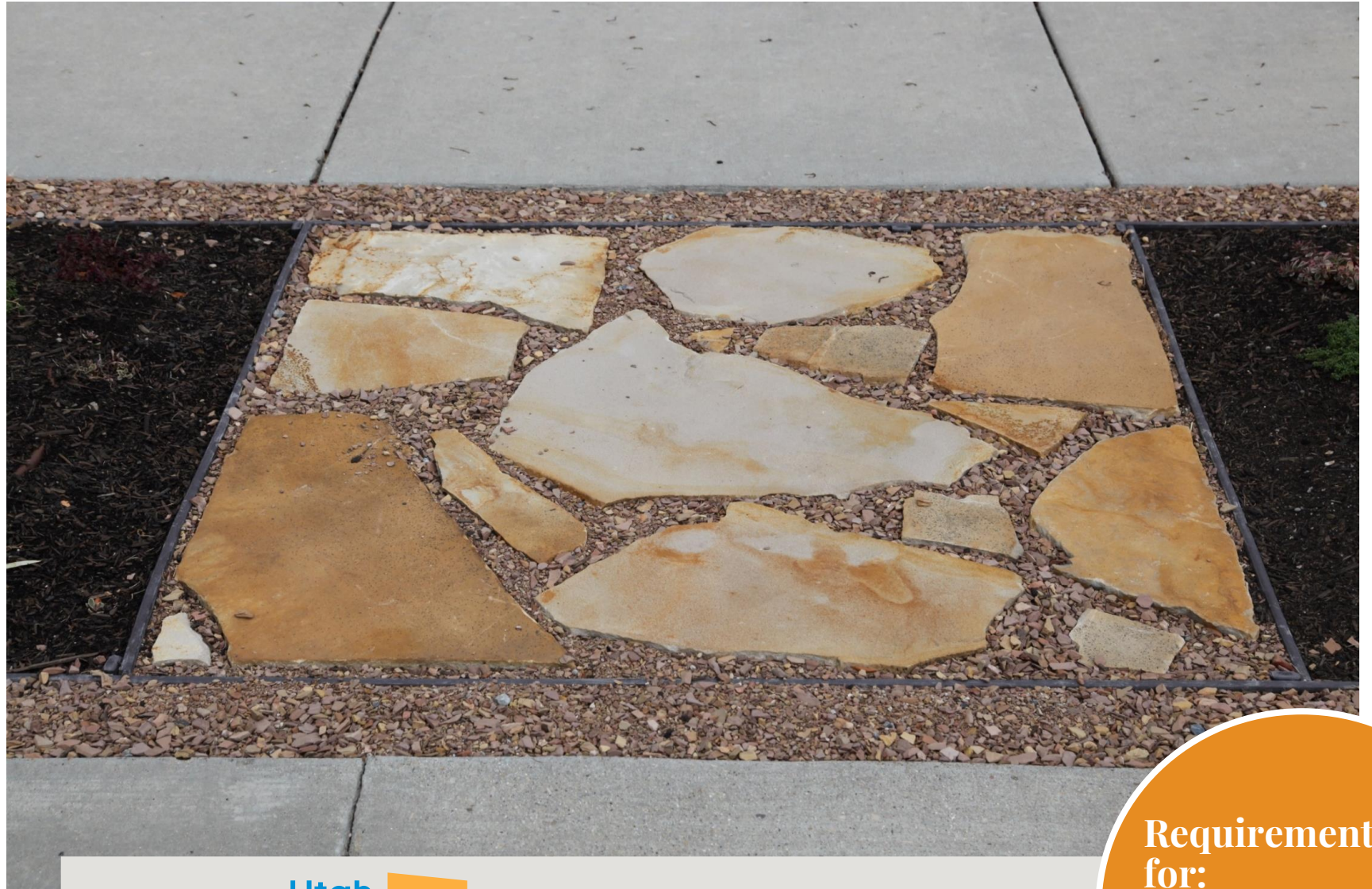
- Hardscape materials should be kept away from any existing or new trees
- This helps maintain the health of the tree and the integrity of the hardscape



*Real results from past class participant

Best Practice: Permeable Materials

Hardscape should
be permeable to
water and air



Find Localscapes Rewards and other rebates at:
UtahWaterSavers.com

Requirement
for:



5

Plants

- Plants should be waterwise, compact, and tough
- Salt tolerance is recommended
- We strongly discourage the removal of existing healthy trees



*Real results from past class participant

5

Plants

- Plants reduce urban heat islands
- Plants reduce runoff and improve water quality



Best Practice: Plant Height

Plants must be shorter than 24"

Plants in park strips should not block sight lines from the driveway or road



Find Localscapes Rewards and other rebates at:
UtahWaterSavers.com

Requirement
for:



Plant Density

Low Density



Mixed Density



High Density



Best Practice: Plant Coverage

Plants must cover
50% of the ground
plane at maturity

Bulbs and annuals
do not count toward
the required 50%
plant coverage

*Real results from past
class participant

2018



2020



Find Localscapes Rewards and other rebates at:

UtahWaterSavers.com

Requirement
for:



5

Plants: Mulch

- Use 3"-4" of mulch
- Helps retain soil moisture and reduce weeds
- Material is a matter of personal preference

gravel or
river rock



bark or
compost



chat or
DG



Best Practice: Mulch

3-4 inches of mulch are required

Mulch can be rock, wood chips, composted mulch, etc.

Groundcover can count as mulch if it will cover 100% of the park strip at maturity

*Real results from past class participant



Find Localscapes Rewards and other rebates at:

UtahWaterSavers.com

Requirement
for:



5

Plants: Mulch

- Plant in the soil
- Taper the thick mulch layer away from the plants
- Replenish as often as needed to maintain thick layer



Park Strip Maintenance

Tips and techniques to keep it low maintenance and beautiful.



Establishment Watering

- New plants can't handle long periods without water
 - Water every other day for the first two weeks
 - After the first two weeks you can scale back the watering to 2-3 times per week or as needed
-



Established Watering

- Waterwise park strips should be watered deeply and infrequently
 - Once plants are established, they should be watered once per week for about 1 hour
-



Maintenance Mistakes

- Watering park strip plants the same as lawn. This cultivates weeds
 - Not using mulch or putting only a thin layer of mulch in place. Add mulch 3"-4" deep to shade out weeds and preserve soil moisture
-



Localscapes Weed Control Recipe

1. Water with drip irrigation
 2. Apply 3"-4" of mulch
 3. Avoid soil compaction
 4. Minimize soil disruption
 5. Use herbicides only **AFTER** trying the first four steps
-



*Real results from past class participant

Maintenance Mistakes

- Weed barrier fabric kills the soil
 - Only works on weeds temporarily
 - Decreases plant health
 - Should only be used under hardscape
-





The Park Strip Palette

Tough, waterwise
favorites for Utah
park strips

Park Strip Design

Foliage— the
designer's secret!



Park Strip Design

Repeat plants to
create order



Full-Sun Favorites

Plants that can
take the heat!



Sol Dancer Daisy

Hymenoxys acaulis v arizonica

'Sol Dancer'

- Super blooming Utah native (April- November)
 - 15-16" tall x 12-15" wide
 - Tidy mat of green foliage
-



Chocolate Flower

Berlandiera lyrata

- Super blooming Utah native (April- November)
- 15-16" tall x 12-15" wide
- Tidy mat of green foliage



Penstemon species

Penstemon spp.

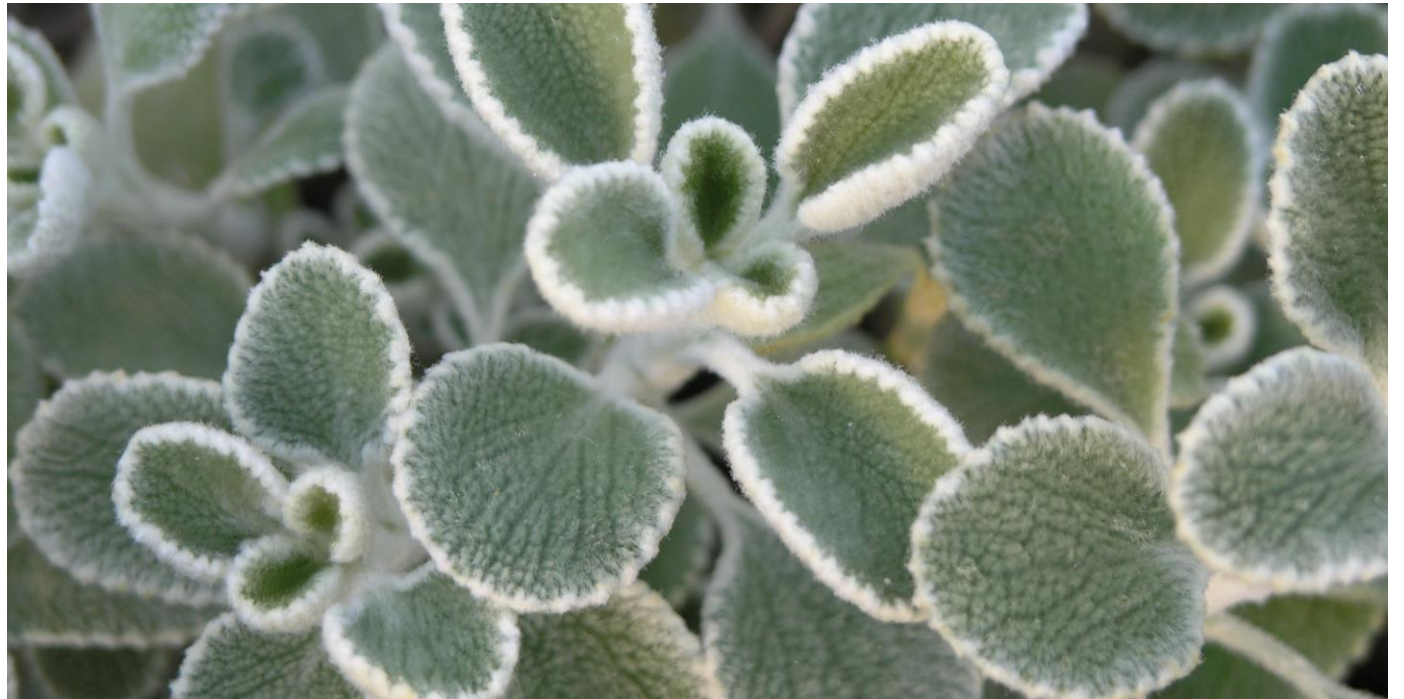
- Utah native
 - Many varieties
 - Many colors available
-



Silver Edged Horehound

Marrubium rotundifolium

- Low growing evergreen
 - 10" tall x 18" wide
-



Blonde Ambition Blue Grama Grass

Bouteloua gracilis 'Blonde Ambition'

- Requires little care yet offers great interest
 - 8-24" tall x 8-18" wide
 - Chartreuse seed heads
-



Fire Chalice

Zauschneria californica

- Low, spreading groundcover
- 1' tall x 2' wide
- Summer-fall bloom



Hummingbird Mint

Agastache spp.

- New low-growing cultivars for park strips
- 2' tall x 2' wide
- Summer-fall bloom in many colors



Catmint

Nepeta spp.

- Low, spreading groundcover
- 1' tall x 2' wide
- Spring bloom, repeats



Blue Oat Grass

*Helictotrichon
sempervirens*

- Multi-season interest
- 2' tall x 2' wide
- Blue-green blades



Part-Shade Favorites

Understory plants
for dry shade



Sedge

Carex spp.

- Ornamental grass for dry shade
- 1' tall x 1' wide
- Multiple foliage colors



Kinnikinnik

Arctostaphylos uva-ursi

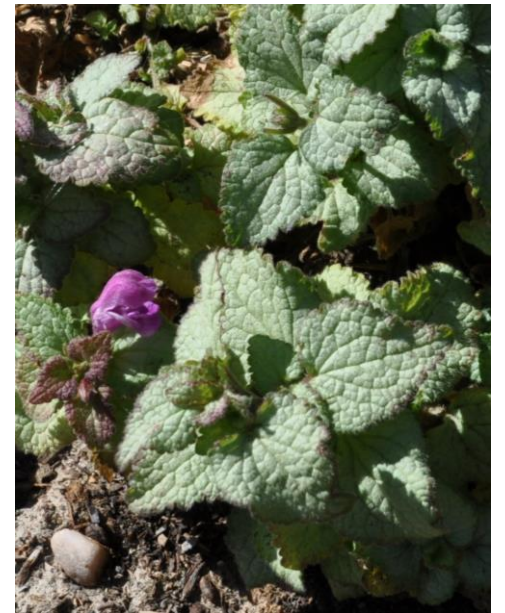
- Evergreen groundcover shrub
- 8" tall x 2" wide
- Tiny flowers in spring, berries in fall



Dead Nettle

Lamium spp.

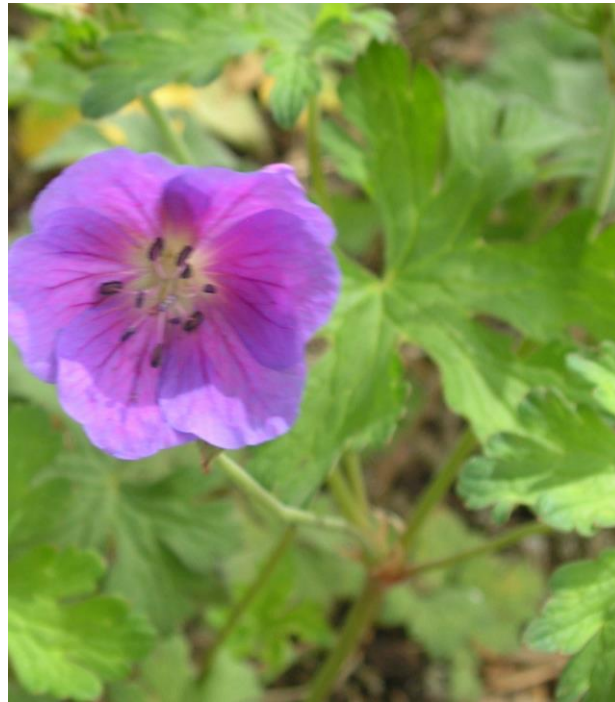
- Fantastic foliage option
- 8" tall x 2' wide
- Pink, purple or white flowers



Hardy Geranium

Geranium spp.

- Prolific flowers
- 1' tall x 2' wide
- Pink, purple or blue flowers



Plumbago

*Ceratostigma
plumbaginoides*

- Cobalt blue flowers
- 1' tall x 2' wide
- Vivid red fall color



Park Strip Trees

Tough, waterwise
trees



Golden Candle Golden Rain Tree

Koelreuteria paniculata

- Interesting yellow flowers and pods
- Salt tolerant
- 20' tall x 4' wide



Common Hackberry

Celtis occidentalis

- Irregular shape
- Salt tolerant
- 50' tall x 30' wide
- Not for use under utility lines



City Sprite[®] Zelkova

Zelkova serrata CITY SPRITE

- Very little tree “litter”
 - 25’ tall x 20’ wide
 - Smaller tree to use under utility lines
-



Ivory Silk Lilac

Syringa reticulata

- Ivory lilac flowers late spring—after other flowering trees have bloomed
- 25' tall x 20' wide
- Smaller tree to use under utility lines



Spring Snow Crabapple

Malus x 'Spring Snow'

- Fruitless, lightly scented blooms
 - 25' tall x 20' wide
 - Smaller tree to use under utility lines
-



Park Strip Projects

Ideas from
successful park
strip flips



Park Strip Projects

Park strip plants, like the Sedums shown here, can fill the space quickly and uniquely

Fall
2016



Summer
2017



Park Strip Projects

Junipers,
grasses & bulbs



Park Strip Inspiration

Multiple paths
for easy passage



Park Strip Inspiration

Simple design
with trees and
one plant type



Park strip groundcovers

Barberry + Sedum



Mixed Sedums



Creeping Thyme



The Pedestrian Experience



Key Requirements

- 50% plant coverage at maturity
- Plants shorter than 24 inches at maturity
- 3-4 inches of mulch
- Drip system on its own zone
- Only one type of drip irrigation is used
- The water must be on for your final visit



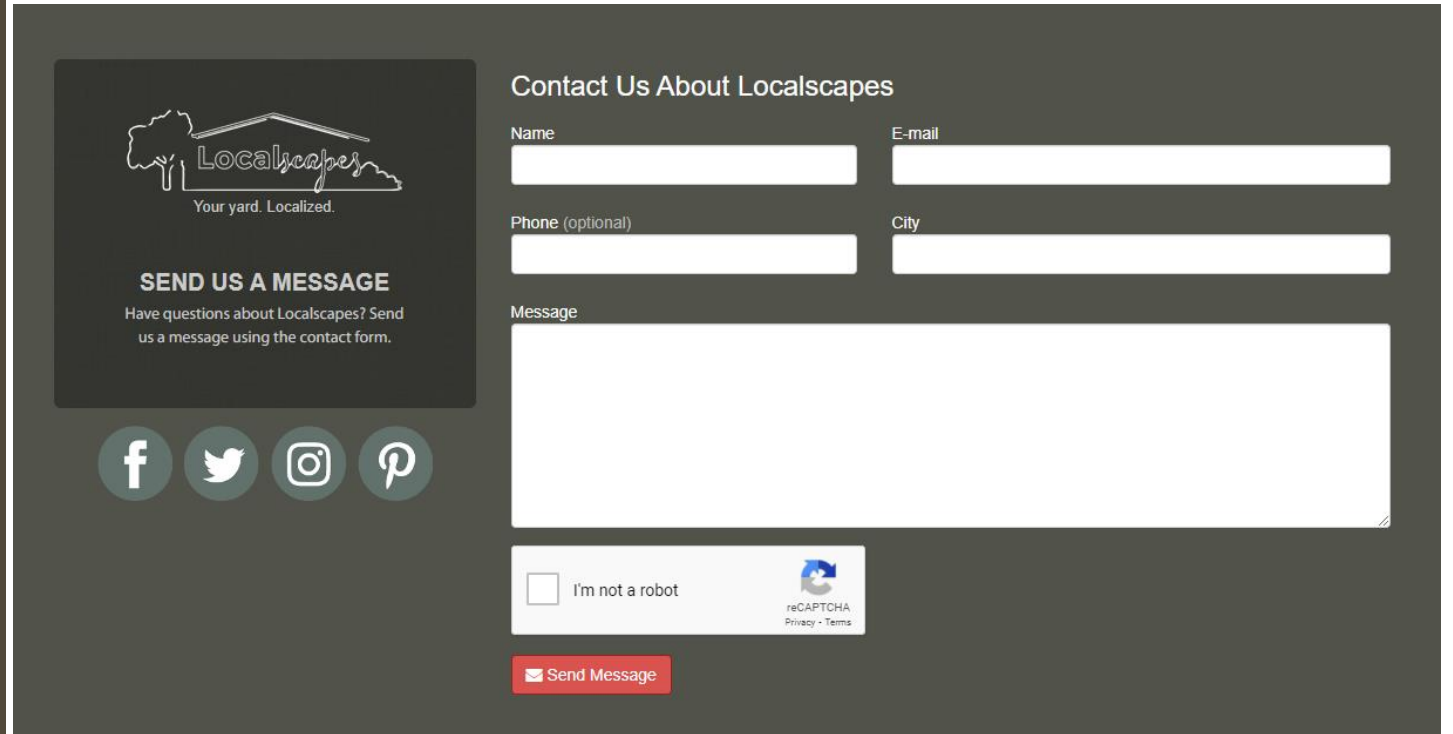
Find Localscapes Rewards and other rebates at:
UtahWaterSavers.com

Requirement
for:



Next Steps:

- Become a partner
www.localscapes.com
- Visit Conservation Garden Park for ideas
- Visit
www.utahwatersavers.com
for more information about available programs



The image shows a contact form for LocalScapes. On the left, there is a logo for LocalScapes with the tagline "Your yard. Localized." and a "SEND US A MESSAGE" button. Below the logo are social media icons for Facebook, Twitter, Instagram, and Pinterest. On the right, the form is titled "Contact Us About LocalScapes" and includes input fields for Name, E-mail, Phone (optional), and City. A large text area is provided for the message. At the bottom, there is a checkbox for "I'm not a robot" and a reCAPTCHA logo. A red "Send Message" button is located at the bottom right of the form.

LocalScapes
Your yard. Localized.

SEND US A MESSAGE
Have questions about LocalScapes? Send us a message using the contact form.

Contact Us About LocalScapes

Name

E-mail

Phone (optional)

City

Message

I'm not a robot

reCAPTCHA
Privacy - Terms

Send Message

Program Eligibility:

- Client resides in an area with a participating water district
- Client has living lawn
- Client has a first site visit before lawn is removed



It Pays to Save

Ready to start saving water on your landscape or in your home? Create a Utah Water Savers account to view cash rebates and programs available in your area.

Programs and Rebates

Ineligible:

- Won't reach 50% plant coverage at maturity
- Less than 3 inches of mulch
- Drip irrigation in the park strip is still attached to the sprinklers in the lawn

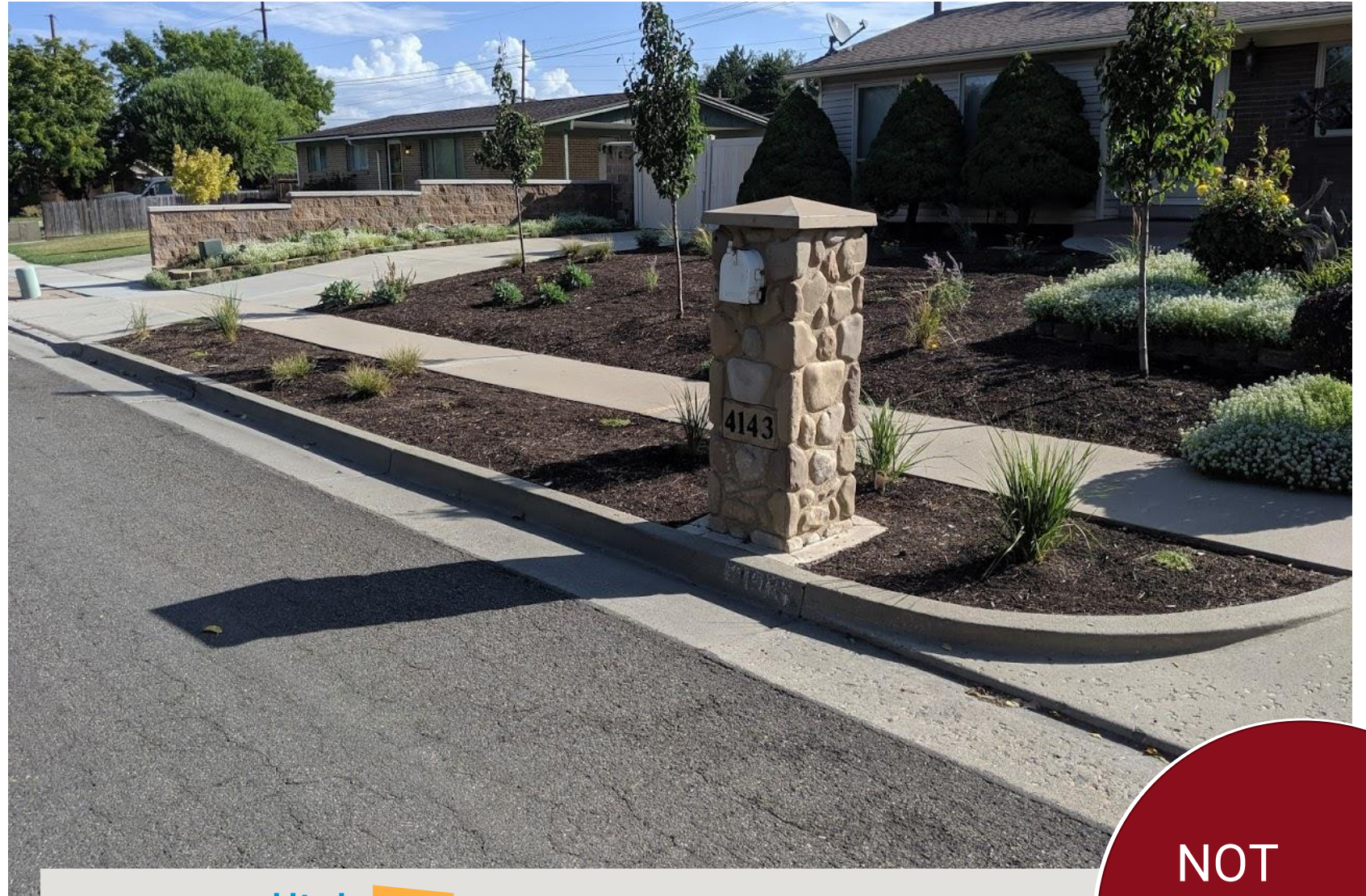


Find Localscapes Rewards and other rebates at:
UtahWaterSavers.com

NOT
ELIGIBLE

Ineligible:

- Plant height exceeds 24 inches at maturity



Find Localscapes Rewards and other rebates at:
UtahWaterSavers.com

**NOT
ELIGIBLE**

Program Contact Information

Weber Basin Water Conservancy District

- drice@weberbasin.com
- hfassold@weberbasin.com

Central Utah Water Conservancy District

- savannah@cuwcd.com

Jordan Valley Water Conservancy District

- amandas@jvwcd.org