

LEHI LEDGER

February 2025



Shaping Our Future

WRITTEN BY HEATHER NEWALL



When I was elected to serve as a Lehi City Council member, I never imagined the role I would take in helping create a new school district. I have approached this responsibility with great care, dedicating considerable time and effort to studying Lehi's position, understanding historical precedent, and fostering collaboration with all cities involved.

With voter approval to form a new school district, this year's election holds particular significance for Lehi. In addition to selecting the inaugural school board, voters will decide on the positions of mayor and two city council members. Leadership matters and Lehi has been fortunate to have leaders who prioritize collaboration and progress. Our city has become a model for collaboration with neighboring communities and is often recognized for advocating effective solutions.

In my first year in office, I have grown and benefited under the guidance of remarkable, experienced leaders whose wisdom and dedication have shaped Lehi's success. Continuing this tradition of electing strong, visionary leaders will be essential as we navigate the opportunities and challenges ahead.

Recently, I was honored to be selected by the cities in our new district as one of two elected

City Information

INFORMATION CENTER: 385.201.1000
LEGACY CENTER: 385.201.2000
POLICE: 385.201.1005
FIRE: 385.201.1081
LIBRARY: 385.201.1050
POWER: 385.201.1040
STREETS: 385.201.1900
UTILITIES: 385.201.1000
WATER: 385.201.1900
LITERACY CENTER: 385.201.1060
SENIOR CENTER: 385.201.1065



officials tasked with determining the new school district board boundaries. I am committed to ensuring fair representation that recognizes and addresses every community's unique needs and priorities.

Electing our new district's inaugural school board members will be a critical decision for Lehi. This first board will face the unique challenge of setting the foundation for a new district—establishing priorities, building trust, and positioning the district for long-term success. These roles require candidates with valuable experience, strong leadership skills, and the capacity to dedicate the time and effort necessary to make this new district one where students and educators excel.

If you are one of these individuals, now is the time to start thinking and preparing. If you have the vision, skills, and dedication to step into this important responsibility, I encourage you to consider running. It is also the time to encourage those in your circle who you know would make strong leaders to step up and serve.

Education is one of the most essential services provided to our community. The quality of education directly influences economic growth and the overall vitality of Lehi. Whether or not you have children in school, these elections and the decisions made by our future board will affect us all. This is a unique opportunity to invest in the community we aspire to build—one that values education as the foundation for progress and opportunity.

- Heather Newell

Library News

The library will not be holding the Gala Fundraiser this year. Thank you for your past support and please join us next year for our event!

February Book Clubs (no registration needed)

Book Club- The Matchmaker's Lonely Heart

by Nancy Campbell Allen

at the Programming building 265 N 400 W Lehi

Wednesday, February 12th 6:30-7:30 pm

Chapter Chats - for kids ages 7+

Ivy + Bean and the Ghost that had to go

by Annie Barrows

at the Programming Building 265 N 400 W Lehi

Tuesday, February 11th 4:00-4:45 pm



Check out **Gale Resources** on our website! Gale offers a suite of high quality online learning resources! Try *Gale books and authors*- Answer the age-old question, "What do I read next?" Search and match reading interests to books, authors, genres, or topics. **Available through the Gale Learning resources link on our home page.**

Library Hours: Monday -Thursday 9 am - 8 pm

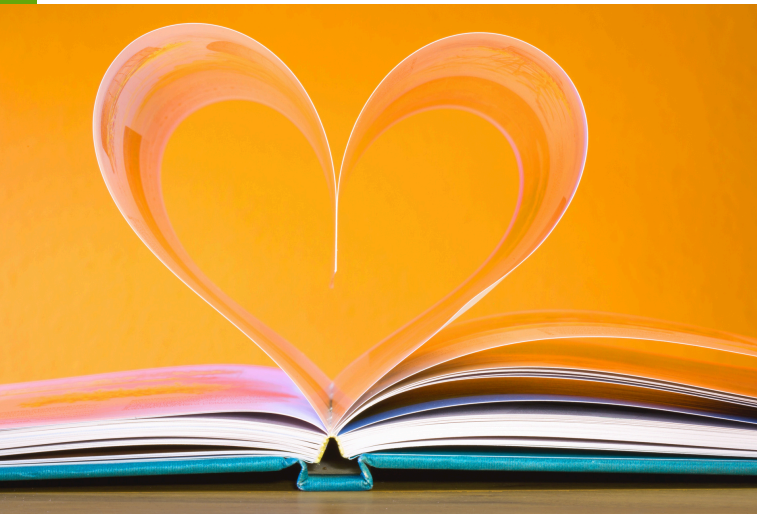
Fridays - 10 am - 6 pm

Saturdays 10 am - 4 pm

Closed Sundays

For more information, please visit our website

www.lehi-ut.gov/library



Literacy Center

Our Spring ABC Pre-K Session began last month and will run through May 7 & 8, 2025. Our next ABC Session will be Fall of 2025, watch our website and Facebook page for more information. Classes are 2 hours twice a week, Mon/Wed OR Tues/Thurs from 9:30 a.m. to 11:30 a.m. Eligible students for our Fall 2025 Session must be 4 years old as of September 1, 2025. Students may only attend one session of our ABC program.

Our current Winter After-School Reading & Math session continues until February 13, 2025. Registration for our Spring After-School Session will be February 18 & 19 from 2 p.m. to 5:30 p.m. at the Lehi Literacy Center. This session runs March 3 through May 8, 2025. Our after-school programs offer reading and math classes for Lehi students in K - 4th grade. Classes are 45 minutes, twice a week, either Mon/Wed OR Tues/Thurs. Class times are 4 p.m. & 5 p.m.

Dates To Remember:

February 12 & 13 Winter After-School Classes Last Day

February 17 & 18 Presidents Day - No Classes (Closed 17th)

February 18 & 19 Spring After-School Open Registration

For updates and information visit:

www.lehi-ut.gov/recreation/literacy/

www.facebook.com/LehiLiteracyCenter

Hutchings Museum

NIGHT AT THE MUSEUM

When all the Exhibits
Come To Life

FEBRUARY 7th & 8th

Join us between 6-8 PM

\$10 A Person Ages 4+ (3 & under free)

55 N Center Street, Lehi 801-768-7361



Lehi City Cultural Organization Grant

The **Cultural Organization Grant** application opens in February. Watch our city website and social media for the opening date.

The grant is funded by the the Parks, Arts, Recreation, and Culture (PARC) tax. Visit <https://www.lehi-ut.gov/cultural-org-grants/> to see if your organization, or facility qualifies for the grant.

Senior Center

News & Updates:

Check out the Lehi Senior Center webpage online www.lehi-ut.gov/recreation/seniors/ or visit our Facebook page [@LehiSeniorCenter](https://www.facebook.com/LehiSeniorCenter) to see details about meals, events, and our newsletter.

Weekly Classes:

Monday: Tai Chi 9:30 a.m.
Monday: Watercolor 9:30 a.m.
Tuesday: Watercolor 9:30 a.m.
Tuesday: Crochet Cub 10:15 a.m.
Tuesday: Bingo 11:30 a.m.
Wednesday: Sit and Fit 11:00 a.m.
Friday: Line Dance 10 a.m.
Friday: Bingo 11:30 a.m.

Daily Lunches (Monday-Friday):

Inside meals are available with required reservations. Call 385-201-1065 and leave a message. A \$4 donation per meal is encouraged. Lunch is served at noon.

Special Events and Activities:

February 12 - BUNCO Bash. A fun, easy game with dice. Starts at 12:30 p.m.
February 14 - Valentines Celebration
February 17 - Lehi Senior Center closed in observance of Presidents Day.
February 20 - Aquarium (Tentative date)
(Must sign up and pay in advance)
February 24 - Monday Movie Mania at 12:30 p.m.
February 28 - Birthday Celebration



📷 Shera Wright

Lehi City Events

- 2/4** City Council Work Session
4 p.m. @ City Hall
- 2/6** Planning Commission
Work Session
5:30 p.m. @ City Hall
- 2/11** City Council Meeting
7 p.m. @ City Hall
- 2/13** Planning Commission
7 p.m. @ City Hall
- 2/25** City Council Meeting
7 p.m. @ City Hall
- 2/27** Planning Commission
7 p.m. @ City Hall



HISTORICAL MARKER UNVEILING

*Come celebrate the
Broadbent's Store Historical Marker!*

Thursday, February 13, 2025

6 PM

Broadbent Community Room
128 N. 100



RECREATION NEWS

We have lots of exciting activities happening this Winter!

Don't miss out!

Did you know participation in formal swimming lessons has an 88% reduction in the risk of drowning in 1- to 4-year-old children.

Come sign up for swim lessons!

Winter Youth Swim Lessons

Session 2 February 3, 4, 5, 6, 10, 11, 12, 13, 14 (registration opens 1/18)

Session 3 March 17, 18, 19, 20, 21, 24, 25, 26, 27 (registration opens 2/15)

Session 4 April 7, 8, 9, 10, 11, 14, 15, 16, 17 (registration opens 3/29)

Session 5 May 5, 6, 7, 8, 9 (55-minute classes)

Fee: Lehi Res. \$41; Non-Res. \$62

Lifeguard Classes

Class 2 February 24-28 March 1, 3-7

Fee: \$210

(Participants that pass this class can apply for a job at www.lehi-ut.gov)

Program & Sports Registering NOW!

Adult Concealed Weapons Permit, Babysitters Course, Cheer, Dance, Evil Science Class, First Aid & CPR, Gymnastics, Itty Bitty All Ball, Lego Class, Martial Arts, Preschool, Science Class, Swimming Lessons, Boys Baseball, Co-Ed Volleyball, Girls Softball, Indoor Soccer, Machine Pitch, Spring Outdoor Soccer, Spring Wrestling, T-Ball/Coach Pitch, and Track & Field.

Follow the Legacy Center on Facebook at www.facebook.com/lehilegacycenter or visit www.lehi-ut.gov/legacy-center/.



2025 SPORTS REGISTRATION DEADLINES

PROGRAM	AGE/GRADE	RESIDENT REGISTRATION	GENERAL REGISTRATION	DEADLINE
• Indoor Soccer	K-9th Grade	December 1	January 1	January 15
• Boys Baseball	3rd-8th Grade	January 1	February 1	February 12
• Girls Softball	3rd-12th Grade	January 1	February 1	February 12
• Spring Outdoor Soccer	K-9th Grade	January 1	February 1	February 19
• Co-Ed Volleyball	Adult 18+	January 1	February 1	February 19
• Track and Field	6-14 years old	January 1	February 1	March 5
• Spring Wrestling	5th-8th Grade	January 1	February 1	March 19
• T-Ball/Coach Pitch	K/1st Grade	January 1	February 1	March 19
• Machine Pitch	2nd Grade	January 1	February 1	March 19
• Golf	Beg.- Adv.	April 1	May 1	May 21
• Youth Volleyball/Camp	3rd-12th Grade	May 1	June 1	June 18
• Fall Outdoor Soccer	K-9th Grade	May 1	June 1	June 18
• Summer Basketball Camp	K-12th Grade	April 1	May 1	July 9
• Flag Football	K-10th Grade	May 1	June 1	July 9
• Cross Country	6-14 years old	May 1	June 1	July 9
• Womens Volleyball	Adult 18+	June 1	July 1	July 9
• Kids Sports Camp	6-12 years old	April 1	May 1	July 23
• Mens Softball	Adult 18+	June 1	July 1	July 23
• Tennis Lessons	Beg.- Adv.	April 1	May 1	July 30
• Youth Basketball	K-2nd Grade	July 1	August 1	August 20
• Fall Wrestling	K-4th Grade	July 1	September 1	September 17
• Youth Basketball	3rd-8th Grade	July 1	September 1	October 15
• Youth Basketball	9th-12th Grade	July 1	October 1	November 5
• Mens Basketball	Adult 18+	October 1	November 1	December 3

REGISTRATION OFFICE

123 North Center Street

Monday-Friday | 8 a.m. to 6 p.m.

Closed Holidays

Online Registration Available:

www.lehi-ut.gov

Mandatory Sportsmanship Program required for most programs. Visit www.lehi-ut.gov/FANS.

See the Lehi City Website for more information about adaptive recreation sports.

*Some programs have limited space and may fill before the deadline date. Dates are subject to change without notice.

Schedules : [Quickscores.com/lehi](https://quickscores.com/lehi)

Follow us on Facebook & Instagram.

