

# LEHI CITY

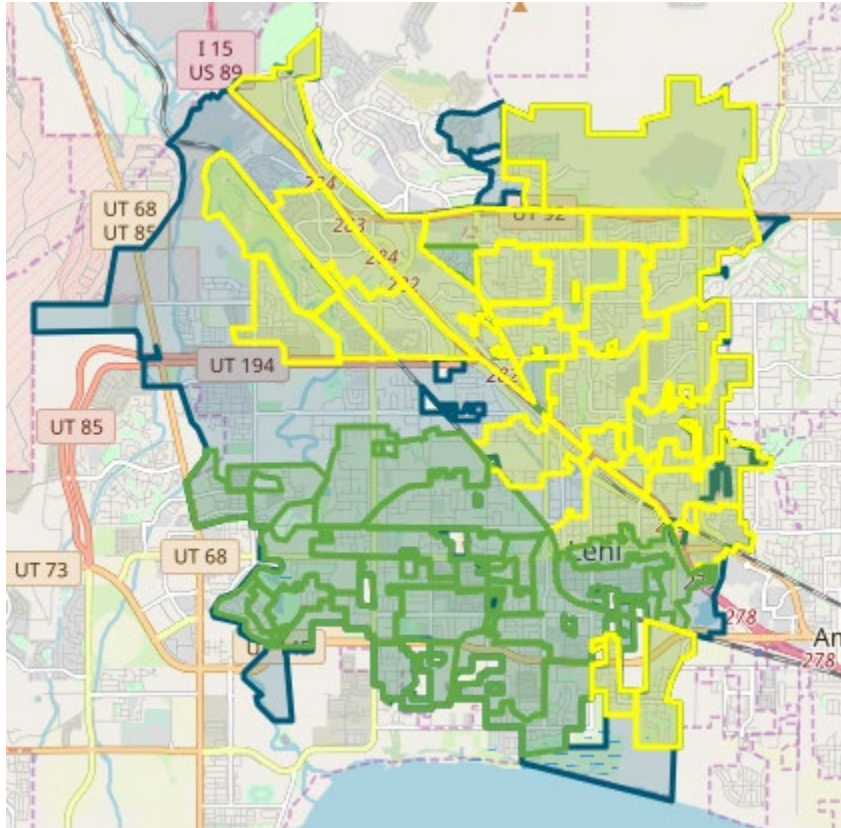
## FIBER NETWORK MONTHLY UPDATE

July 31, 2024





## LEHI FIBER TO MY CITY MAP



- Lehi City
- Construction in Progress
- Fiber Ready – Contact ISP

## PROJECT OVERVIEW

### NOTICE TO PROCEED

17 May 2022

### DEMAND AGGREGATION

#### LAUNCH

8 July 2022

### GROUNDBREAKING CEREMONY

6 September 2022

### SUBSTANTIAL COMPLETION

26 July 2025

### COMPLETED BORING

126,171 feet

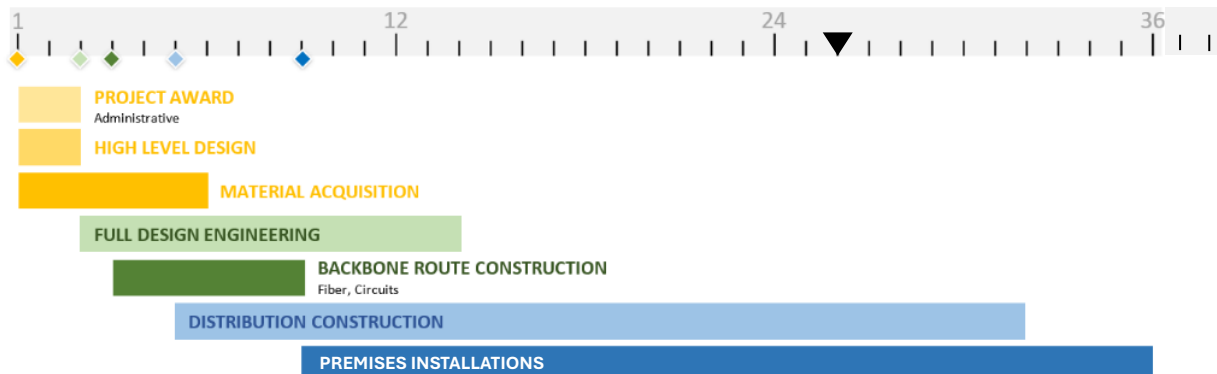
### COMPLETED MICROTRENCHING

136,231 feet

### COMPLETED FIBER PLACEMENT

772,583 feet

## 36-MONTH PROJECT TIMELINE





## NETWORK OPERATIONS and NETWORK AREA CLOSE OUT

Strata Networks and Lehi City are working together to complete planning and fiber designs for Lehi Fiber facilities as part of new upcoming development projects that are within the city limits. Planning and care are provided so that these new developments can be integrated into the existing Lehi Fiber network systems under construction. Strata has begun construction on one of these new developments and will begin construction on other developments within the upcoming weeks. Most of the work within these projects consists of installing and splicing fiber cables.

The Lehi Fiber team and Strata are working on construction punch lists, completion checklists, and details to complete and closeout some of the initial build cabinet and Network Areas. Once cabinet and Network Areas are fully complete and closed out, Lehi City will obtain ownership of those portions of the network. Customer sign ups and associated work that will occur after an area has been closed out will transition to network operations. The ability to sign up for service on the network does not change due to the close out and ownership transition of a network area to Lehi City. Once an area is opened for customer orders the sign-up process workflows and systems do not change.

## ENGINEERING and CONSTRUCTION

### RING AND DISTRIBUTION FIBER CONSTRUCTION

- Construction for **cabinets 37A, 36A, 36B, 11, 31, 1A, 1B, 30, 19, 38, 40, 39, 41, 33, 32, 33N, 27A, 27B, 28A, 28B, 16B, 16A, 26, 14A, and 14B** are in progress. Once construction is complete and fiber is placed, all locations within these cabinet boundaries may receive service. Notifications to the citizens informing them of service availability will be given at that time.
- Aerial make-ready work is in progress for **cabinet 14A and 14B**.
- Construction for **additional cabinets** will begin in the upcoming weeks. Preparation and scheduling for additional cabinets to start construction is being finalized.
- Initial communication with citizens generally occurs one week before cabinet areas begin construction.
- Construction for **several cabinets** are being completed. Fiber blowing and splicing has begun. These cabinets will be taking customer orders in the upcoming weeks. We are anticipating a cabinet being completed and ready for new customer orders about every other week.
- By the end of August there will be nine total cabinet areas left to begin construction. All other cabinets will be in the construction phase or be completed such that customers may request service.



Aerial make-ready work by Lehi Power is in progress for some of the cabinets that are currently under construction. Additional power make-ready work in other cabinet areas will begin in upcoming weeks.

Joint use telecommunications make-ready work in all cabinet areas is intended to be completed during the Lehi Fiber aerial installation.

### CUSTOMER INSTALLATIONS

**Cabinet Areas 5, 18, 7, 9, 8, 4A, 4B, 10A, 10B, 17, 2, 13A, 13B, 3A, 3B, 21, 34, and 37B** are currently taking orders for new service. Customers within additional cabinet areas will be available once construction, fiber blowing, and fiber splicing are completed.

Coordination with the Lehi City team is ongoing to schedule and install fiber at city locations such as city parks, city buildings, power facilities, and water facilities. These locations are being installed once the construction in the serving cabinet area is complete and orders for new service connections are made available.

CUSTOMER INSTALLATIONS				
Cabinet Area	Total Number of Customer Sign-ups	Number of Locations with Fiber Available	Subscribed Customer Percentage	Cabinet Area Opening Sign-Up Date
Cabinet Area 5	119	548	22%	5.24.23
Cabinet Area 18	174	490	36%	9.1.23
Cabinet Area 7	149	531	28%	10.30.23
Cabinet Area 9	161	549	29%	11.13.23
Cabinet Area 8	201	535	38%	12.18.23
Cabinet Area 4A	175	508	34%	2.5.24
Cabinet Area 4B	75	171	44%	2.26.24
Cabinet Area 10A	91	558	16%	3.4.24
Cabinet Area 10B	33	474	7%	3.25.24
Cabinet Area 17	100	622	16%	4.8.24
Cabinet Area 2	168	533	32%	4.22.24
Cabinet Area 13A	89	357	25%	5.6.24
Cabinet Area 13B	61	253	24%	5.20.24
Cabinet Area 3A	98	520	19%	6.3.24
Cabinet Area 3B	124	505	25%	6.17.24
Cabinet Area 21	19	171	11%	7.15.24
Cabinet Area 34	14	652	2%	7.15.24
Cabinet Area 37B	7	117	6%	7.29.24
<b>TOTALS</b>	<b>1858</b>	<b>8094</b>	<b>23%</b>	



## MARKETING/PUBLIC RELATIONS

### GREAT NEWS!

This month the marketing team helped announce several zones as under construction or accepting orders. Working closely with Lehi City, we have reached out to residents in these areas through mailers, emails, social media, and updates on [lehi.fibertomycity.com](http://lehi.fibertomycity.com).

### DEMAND AGGREGATION

As of July 29, 2024, the demand aggregation platform reached a total of **9,492** unique addresses registered within city limits.

Our team continues to work closely with Lehi City to promote the network and its benefits to the community.

### BACK TO SCHOOL

Our team is working with Lehi City to create a back-to-school themed campaign that will focus on the benefits of the Lehi Fiber Network from an education perspective. Some assets our team provided include a flyer, a mailer, several social media posts, and an email.