

LEHI CITY

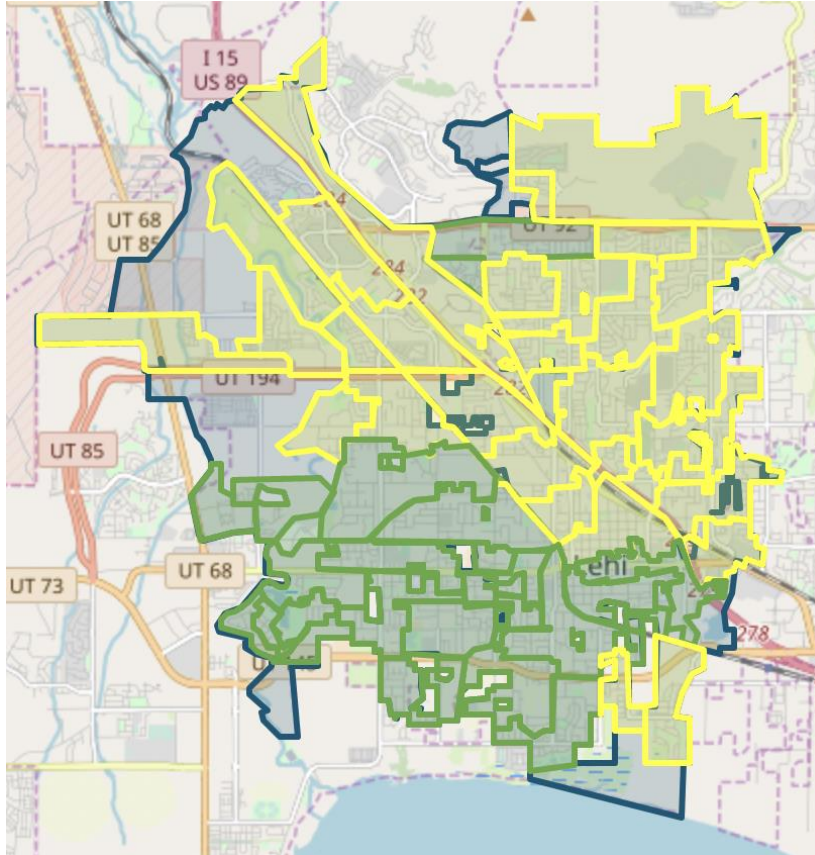
FIBER NETWORK MONTHLY UPDATE

August 28, 2024





LEHI FIBER TO MY CITY MAP



- Lehi City
- Construction in Progress
- Fiber Ready – Contact ISP

PROJECT OVERVIEW

NOTICE TO PROCEED

17 May 2022

DEMAND AGGREGATION LAUNCH

8 July 2022

GROUNDBREAKING CEREMONY

6 September 2022

SUBSTANTIAL COMPLETION

26 July 2025

COMPLETED BORING

151,290 feet

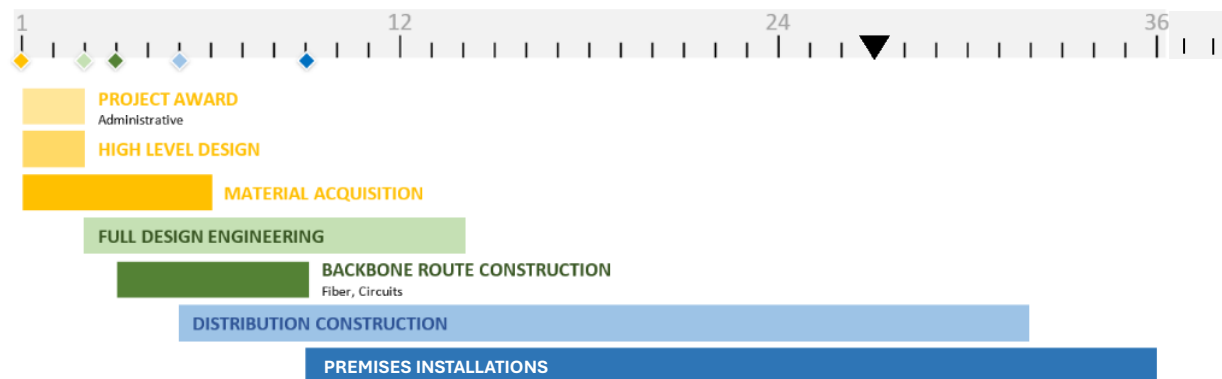
COMPLETED MICROTRENCHING

136,738 feet

COMPLETED FIBER PLACEMENT

811,841 feet

36-MONTH PROJECT TIMELINE





NETWORK OPERATIONS and NETWORK AREA CLOSE OUT

Strata Networks and Lehi City are working together to complete planning and fiber designs for Lehi Fiber facilities as part of new upcoming development projects that are within the city limits. Planning and care are provided so that these new developments can be integrated into the existing Lehi Fiber network systems under construction. Strata has begun construction on some of these new developments and will begin construction on other developments within the upcoming weeks. Most of the work within these projects consists of installing and splicing fiber cables.

The Lehi Fiber team and Strata are working on construction punch lists, completion checklists, and details to complete and closeout some of the initial build cabinet and Network Areas. Once cabinet and Network Areas are fully complete and closed out, Lehi City will obtain ownership of those portions of the network. Customer sign ups and associated work that will occur after an area has been closed out will transition to network operations. The ability to sign up for service on the network does not change due to the close out and ownership transition of a network area to Lehi City. Once an area is opened for customer orders the sign-up process workflows and systems do not change.

ENGINEERING and CONSTRUCTION

RING AND DISTRIBUTION FIBER CONSTRUCTION

- Construction for **cabinets 37A, 36A, 36B, 1A, 1B, 30, 19, 38, 40, 39, 41, 33, 32, 33N, 27A, 27B, 28A, 28B, 16B, 16A, 26, 14A, 14B, 20A, 24, 22, and 20B** are in progress. Once construction is complete and fiber is placed, all locations within these cabinet boundaries may receive service. Notifications to the citizens informing them of service availability will be given at that time.
- Aerial make-ready work is continuing in **cabinets 14A and 14B**.
- Construction for **additional cabinets** will begin in the upcoming weeks.
- Initial communication with citizens generally occurs one week before cabinet areas begin construction.
- Construction for **cabinets 30, 31, and 11** is being completed. Fiber blowing and splicing has begun. These cabinets will be taking customer orders in the upcoming weeks. We are anticipating a cabinet being completed and ready for new customer orders about every other week.
- There are nine total cabinet areas left to begin construction. Scheduling for remaining cabinets to start construction is being finalized. We expect all remaining cabinet areas to begin construction before the year's end.

Aerial make-ready work by Lehi Power is in progress for some of the cabinets under construction. Additional power make-ready work in other cabinet areas will begin in the upcoming weeks.



Joint use telecommunications make-ready work in all cabinet areas is intended to be completed during the Lehi Fiber aerial installation.

CUSTOMER INSTALLATIONS

Cabinet Areas 5, 18, 7, 9, 8, 4A, 4B, 10A, 10B, 17, 2, 13A, 13B, 3A, 3B, 21, 34, 37B, and 35 are currently taking orders for new service. Customers within additional cabinet areas will be available once construction, fiber blowing, and fiber splicing are completed.

Coordination with the Lehi City team is ongoing to schedule and install fiber at city locations such as city parks, city buildings, power facilities, and water facilities. These locations are being installed once the construction in the serving cabinet area is complete and orders for new service connections are made available.



MARKETING/PUBLIC RELATIONS

DEMAND AGGREGATION

As of August 26, 2024, the demand aggregation platform reached a total of **9,628** unique addresses registered within city limits.

Our team continues to work closely with Lehi City to promote the network and its benefits to the community.

GREAT NEWS!

This month the marketing team helped announce several zones as under construction or accepting orders. Working closely with Lehi City, we have reached out to residents in these areas through mailers, emails, social media, and updates on lehi.fibertomycity.com.